

# ***Hustler® Raptor CE Parts Manual***



**HUSTLER®**

•••••

*Excel Industries, Inc.*

••••

*200 S. Ridge Road*

•••

*Hesston, Kansas*

•

*67062*



---

# Table of Contents

## General Information

Service Literature . . . . .	1-1
Options Available From Your Dealer. . . . .	1-1
Using This Manual . . . . .	1-1
Hardware Description Codes & Abbreviations . . . . .	1-2
Standard Torques . . . . .	1-2

## Section 2

Frame . . . . .	2-2
Fenders & Instrument Panel . . . . .	2-4
Battery. . . . .	2-6

## Section 3

Hydraulic Assembly. . . . .	3-2
Transmission Assembly . . . . .	3-4
Transmission Service Parts . . . . .	3-6
Steering & Brake . . . . .	3-8
Steering Cover Assembly . . . . .	3-10

## Section 4

Wheel & Tire . . . . .	4-2
Front Wheel Breakdown . . . . .	4-4
Drive Wheel Breakdown . . . . .	4-6

## Section 5

Engine, Kawasaki FR541V . . . . .	5-2
Engine Service Parts, Kawasaki . . . . .	5-6
Fuel System . . . . .	5-8
Fuel Tank Service Parts . . . . .	5-10

## Section 6

42" Service Deck. . . . .	6-2
42" Deck Pulleys & Spindles. . . . .	6-4
42" Deck . . . . .	6-6
Deck Lift . . . . .	6-8

## Section 7

Seat. . . . .	7-2
---------------	-----



---

# General Information

This manual covers Hustler® Raptor model **932277CE**.

---

## **Service Literature**

<b>PART NO.</b>	<b>DESCRIPTION</b>
604220CE	OPERATOR'S MANUAL
117371EX	WARRANTY STATEMENT
117373	GENERAL SERVICE MANUAL

---

## **Options Available From Your Dealer**

<b>PART NO.</b>	<b>DESCRIPTION</b>
117578	42" MULCH KIT
333724	STEERING LEVER EXTENSION KIT
932459	RAPTOR 2 BAG CATCHER
604436	ARM REST KIT
117703	HOUR METER KIT
799288	FLEX FORKS KIT

*Note: When ordering parts, you must use the part number as shown for each part, not the index number. Always give the model and serial number to your parts and service representative.*

*Note: Items sold in bulk such as seals and hoses are sold by the foot.*

---

## **Using This Manual**

*This manual is part of a service package for the Hustler® mowers. Use of this manual in conjunction with other Hustler® mower and component manuals will provide the information necessary to service and maintain Hustler® mowers.*

*This Parts Manual provides a complete parts listing for the unit. Use this manual when ordering parts. Illustrations used were current at the time of printing, but subsequent production changes may cause your machine to vary slightly in detail. Excel Industries, Inc. reserves the right to redesign and change the machine as deemed necessary, without notification. If a change has been made to your machine which is not reflected in this parts manual, see your authorized dealer for current information and parts.*

*The Service Manual is a service guide for use by Service Technicians. It provides the necessary information needed to perform normal maintenance requirements on these units.*

*The Operator's Manual provides fundamental operational information and operational safety that is needed when operating the mower.*

*The component manuals are furnished by the various manufacturers to be used for the troubleshooting and servicing of their products.*

---

## **Hardware Description Codes & Abbreviations**

The following codes are used throughout this parts manual. Refer to this list when ordering parts.

<b>ABBREVIATION</b>	<b>DESCRIPTION</b>	<b>ABBREVIATION</b>	<b>DESCRIPTION</b>
CB	CARRIAGE BOLT	MB	MACHINE BUSHING
CE	CLEVIS PIN	MS	MACHINE SCREW
CN	CLIP NUT	NT	NUT
CP	COTTER PIN	SC	SELF TAPPING CAP SCREW
CS	CAP SCREW	SH	SOCKET HEAD
CW	CUP WASHER	SB	SHOULDER BOLT
FDRW	FENDER WASHER	SS	SET SCREW
FW	FLAT WASHER	OD	OUTSIDE DIAMETER
HX	HEX HEAD	ID	INSIDE DIAMETER
LW	LOCK WASHER		

## **Standard Torques**

The following chart lists the standard torque values for the threaded fasteners found in this manual. Torque all cap screws, nuts and set screws to these values unless a different torque is shown in the Notes section next to the fastener.

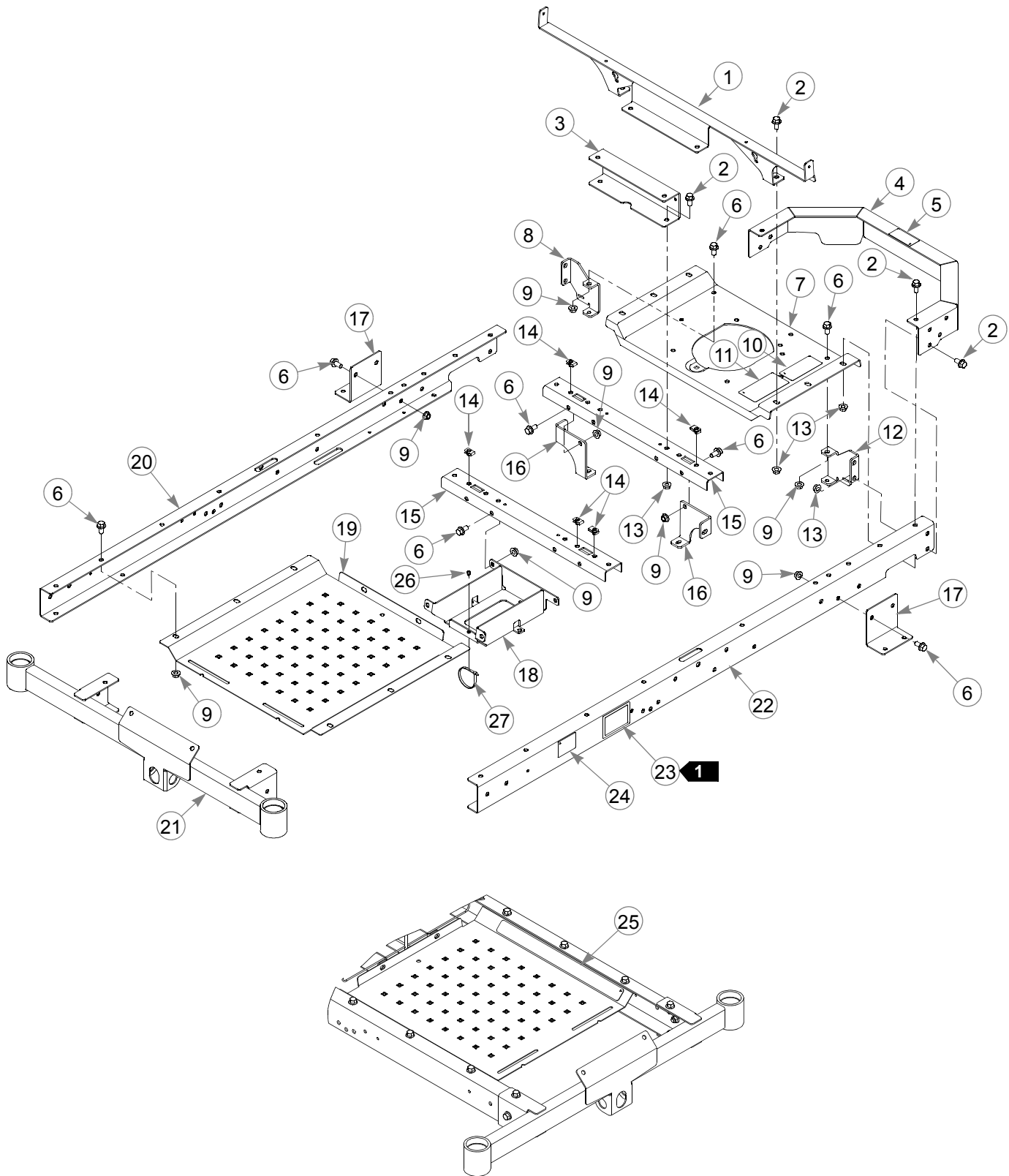
<b>SIZE</b>	<b>FT-LBS</b>	<b>N-M</b>	<b>SIZE</b>	<b>FT-LBS</b>	<b>N-M</b>
.250	8.2	11.1	M3	1	1.3
.312	17	23	M4	2.2	3
.375	30	40	M5	4.5	6.1
.438	48	65	M6	7.7	10.4
.500	73	99	M8	18.5	25
.562	105	143	M10	37	50
.625	145	200	M12	64	87
.750	260	350	M14	80	108.5
.875	420	565	M16	160	215
1.00	625	850	M20	320	435
			M24	555	750

---

## Section 2

Frame .....	2-2
Fenders & Instrument Panel .....	2-4
Battery .....	2-6

# Frame



---

# **Frame**

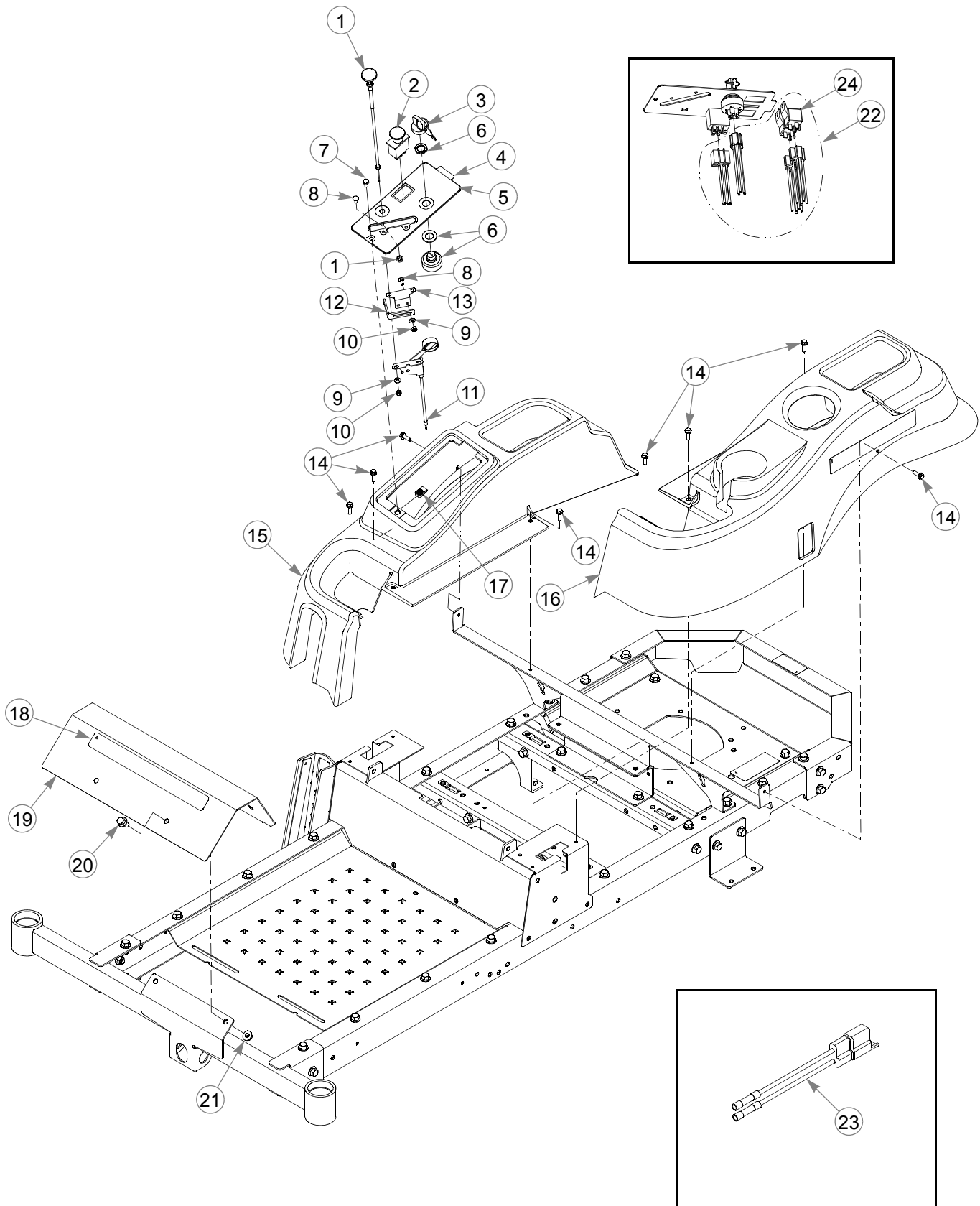
INDEX NO.	PART NO.	QTY.	DESCRIPTION
1	116126	1	SEAT SUPPORT
2	029629	10	CS .375-16 X .75 HX FLK
3	116127	1	SPRING SUPPORT
4	551857	1	BUMPER (WITH DECAL)
5	602041	1	HOT DECAL
6	604176	30	CS .375-16 X .75 HX FLK PLN
7	551858	1	ENGINE PLATE (WITH DECALS)
8	551859	1	RS REAR BRACKET
9	604177	30	NT .375-16 HX FLK PLN
10	601967	1	ENGINE COMPARTMENT DECAL
11	600899	1	PUMP BELT WARNING DECAL
12	551860	1	LS REAR BRACKET
13	016899	10	NT .375-16 HX FLK ZNYC
14	601982	5	CN .250-20 X .15 MAX THK
15	551861	2	CROSS SUPPORT
16	551862	2	RS FRONT BRACKET
17	551863	2	HYDRO BRACKET
18	551864	1	BATTERY TRAY
19	551865	1	FOOT PAN (WITH DECAL)
20	551866	1	RS FRAME CHANNEL
21	551867	1	FRONT CROSS FRAME
22	551868	1	LS FRAME CHANNEL (WITH DECALS)
23	N/A	1	SERIAL NUMBER / SPEC DECAL
24	776310	1	CE MARK DECAL
25	601981	1	SAFE OPERATION DECAL
26	604307	6	PUSH BUTTON MOUNT
27	000331	6	WIRE TIE

---

## **NOTES:**

1. Serial number decal. In the event the serial number tag becomes damaged or illegible, please contact your dealer to order a replacement.
2. Torque all hardware to a minimum of 45 N-m.

# **Fenders & Instrument Panel**



---

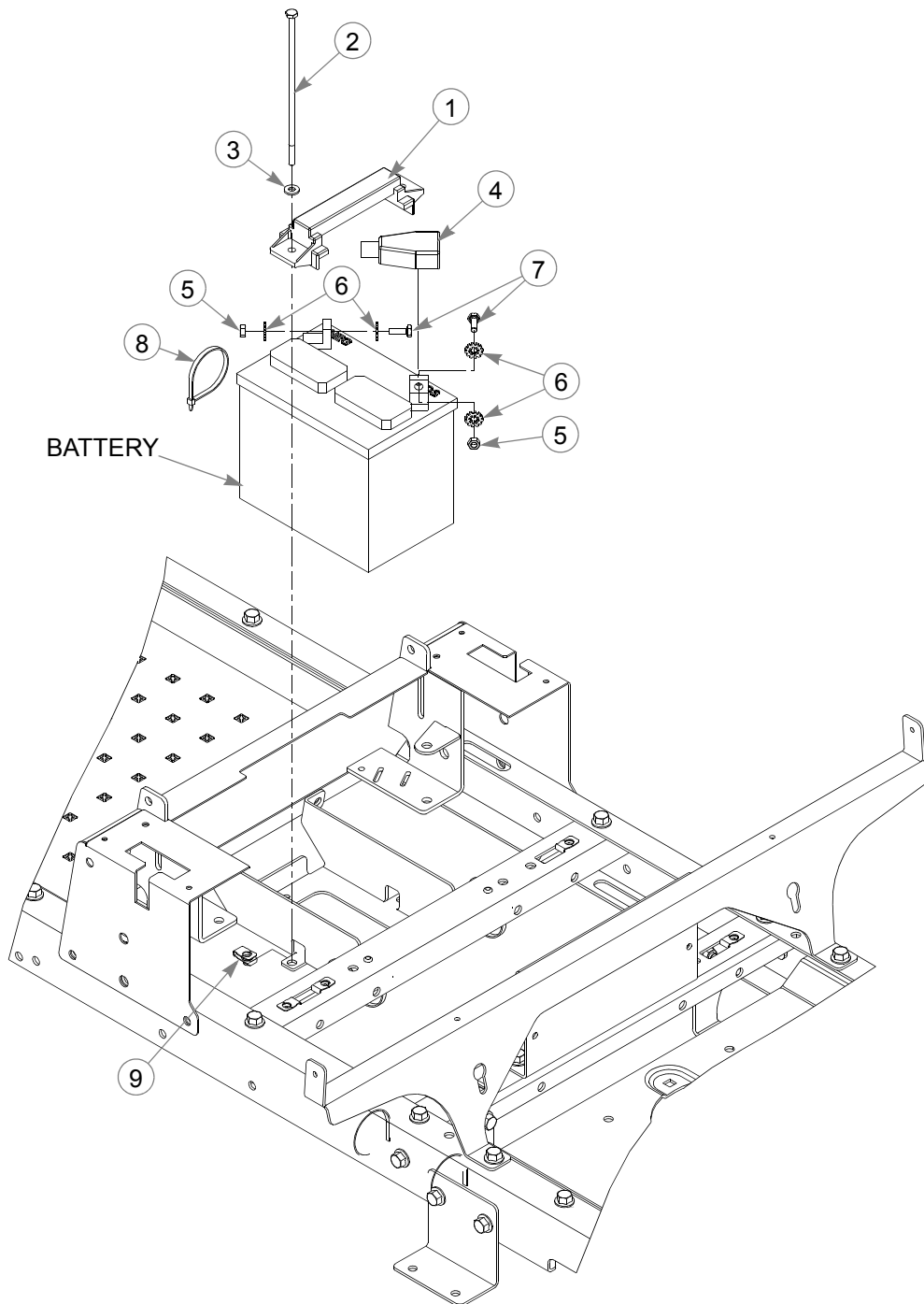
## **Fenders & Instrument Panel**

INDEX NO.	PART NO.	QTY.	DESCRIPTION
1	601097	1	CHOKE CABLE
2	776476	1	PTO SWITCH
3	785808	1	KEY ASSEMBLY
4	551898	1	INSTRUMENT PANEL (WITH DECAL)
5	604196	1	INSTRUMENT PANEL DECAL
6	045898	1	IGNITION SWITCH
7	055947	1	CS .250-20 X .500 HX G5
8	601098	4	CB 10-24 X .500 ZYNC
9	704932	4	FW .219 X .500 X .048 ZNYC
10	059832	4	NT #10-24 HX NL ZN
11	601096	1	THROTTLE CABLE
12	117793	1	THROTTLE STOP
13	117795	1	THROTTLE STOP BRACKET
14	604324	8	CS .250-20 X .75 HX FLG
15	604124	1	RS FENDER
16	604125	1	LS FENDER
17	601982	1	CN .250-20 X .15 MAX THK
18	602407	1	HUSTLER ID DECAL
19	116162	1	FOOTREST
20	029629	2	CS .375-16 X .75 HX FLK
21	016899	2	NT .375-16 HX FLK ZNYC
22	604181	1	WIRE HARNESS
23	114052	1	CLUTCH CONNECTOR REPAIR KIT
24	601053	2	SEALED RELAY (WITH BRACKET)

---

### **NOTES:**

# Battery



---

# **Battery**

INDEX NO.	PART NO.	QTY.	DESCRIPTION
1	604178	1	TIE DOWN STRAP
2	604465	2	CS 0.250-20 X 7.50 HX G5
3	768515	2	FW .281 X .625 X .051/.080 HD ZN/YL
4	771428	1	RED BATTERY CABLE BOOT
5	024927	2	NT .250-20 HX G5 ZNYC
6	029868	4	LW .250 INT-EXT TOOTH Z
7	055939	2	CS .250-20 X .75 HX G5
8	000331	2	WIRE TIE
9	601982	2	CN .250-20 X .15 MAX THK

---

## **NOTES:**

1. When performing service on the mower, disconnect the battery ground cable and do not reconnect it to the battery until the engine is ready to be started.

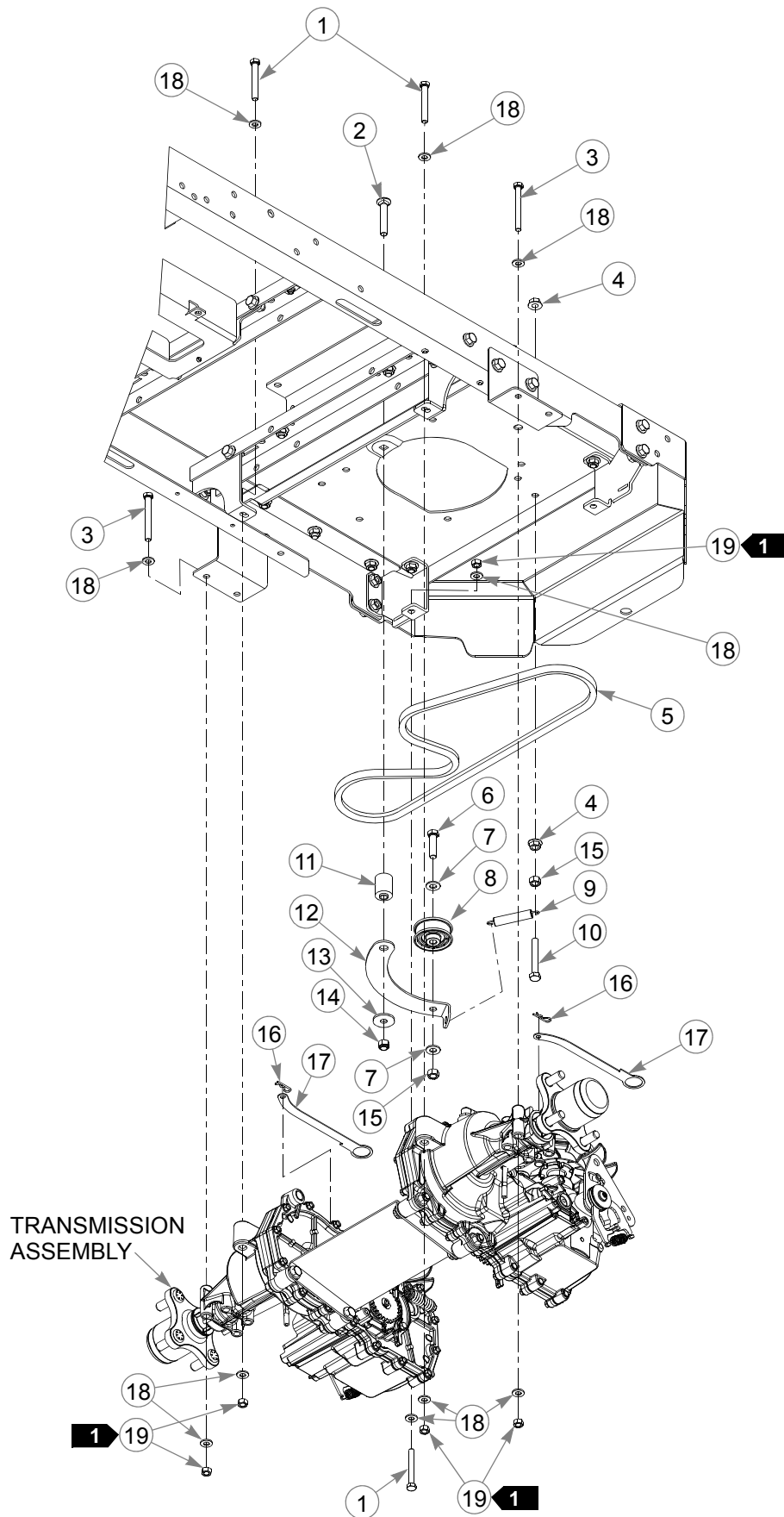


---

## Section 3

Hydraulic Assembly . . . . .	3-2
Transmission Assembly . . . . .	3-4
Transmission Service Parts . . . . .	3-6
Steering & Brake . . . . .	3-8
Steering Cover Assembly . . . . .	3-10

# Hydraulic Assembly



---

## **Hydraulic Assembly**

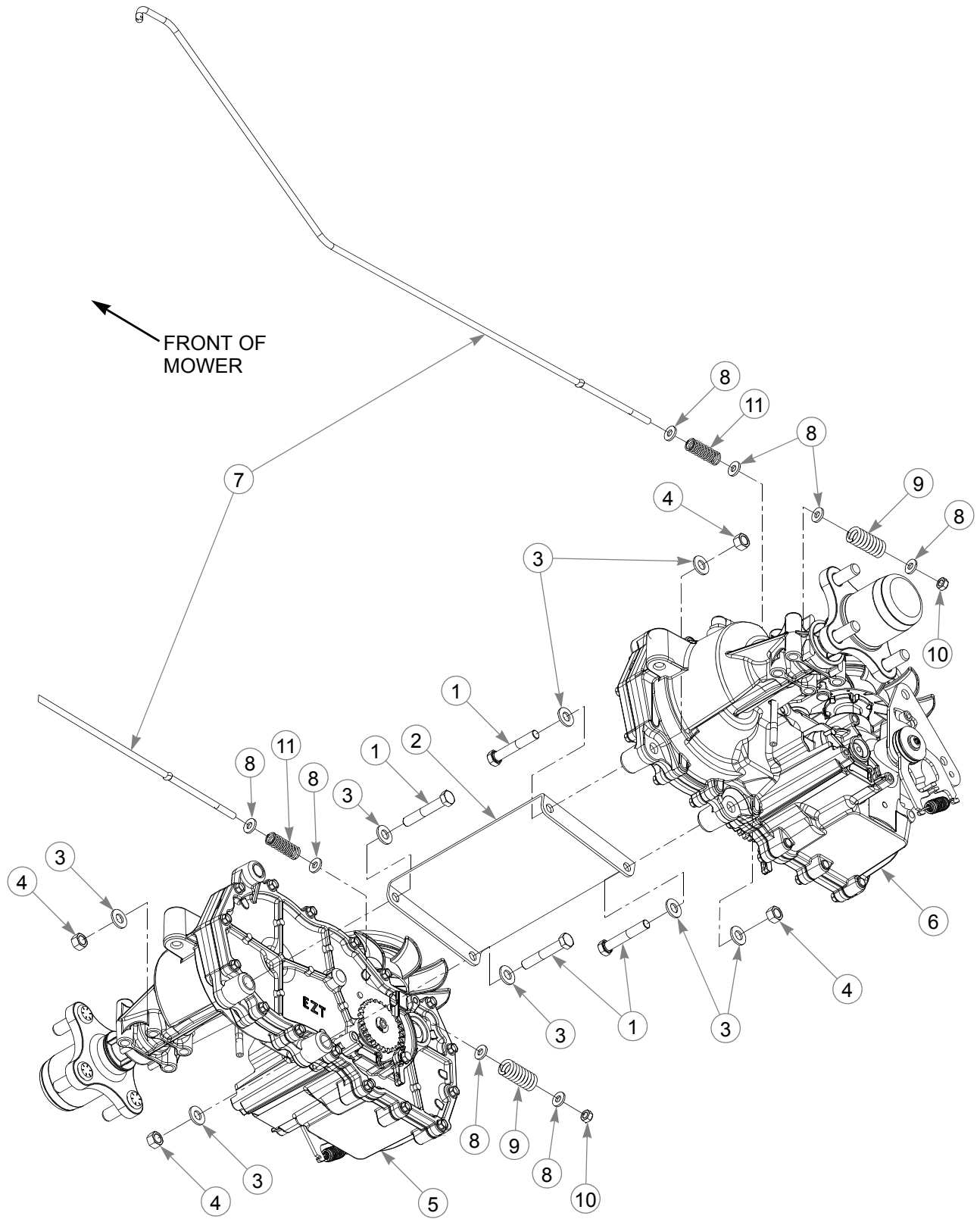
INDEX NO.	PART NO.	QTY.	DESCRIPTION
1	710087	4	CS .312-18 X 2.50 HX G5
2	604343	1	CB .375-16 X 2.25 STD ZN
3	043067	4	CS .312-18 X 3.00 HX G5 Z
4	016899	2	NT .375-16 HX FLK ZNYC
5	603907	1	DRIVE BELT
6	080655	1	CS .375-16 X 1.50 HX G5
7	767954	2	FW .406 X .812 X .060 SAE
8	604491	1	PULLEY 2.0" IDLER
9	604490	1	SPRING
10	604487	1	CS .375-16 X 2.5 FULTH
11	116289	1	IDLER SPACER
12	116287	1	IDLER ARM
13	712893	1	FW .406 X 1.25 X .12 HRD Z
14	086660	1	NT .375-16 HX ZY NL
15	054502	2	NT .375-16 HX G5 ZNY
16	706549	2	HP .080D X 1.19
17	116218	2	TOW VALVE LINK
18	768523	16	FW .343 X .687 X .051/.080H
19	034272	8	NT .312-18 HX G5 ZNYC

---

### **NOTES:**

1. Torque to 17 ft-lbs.

# Transmission Assembly



---

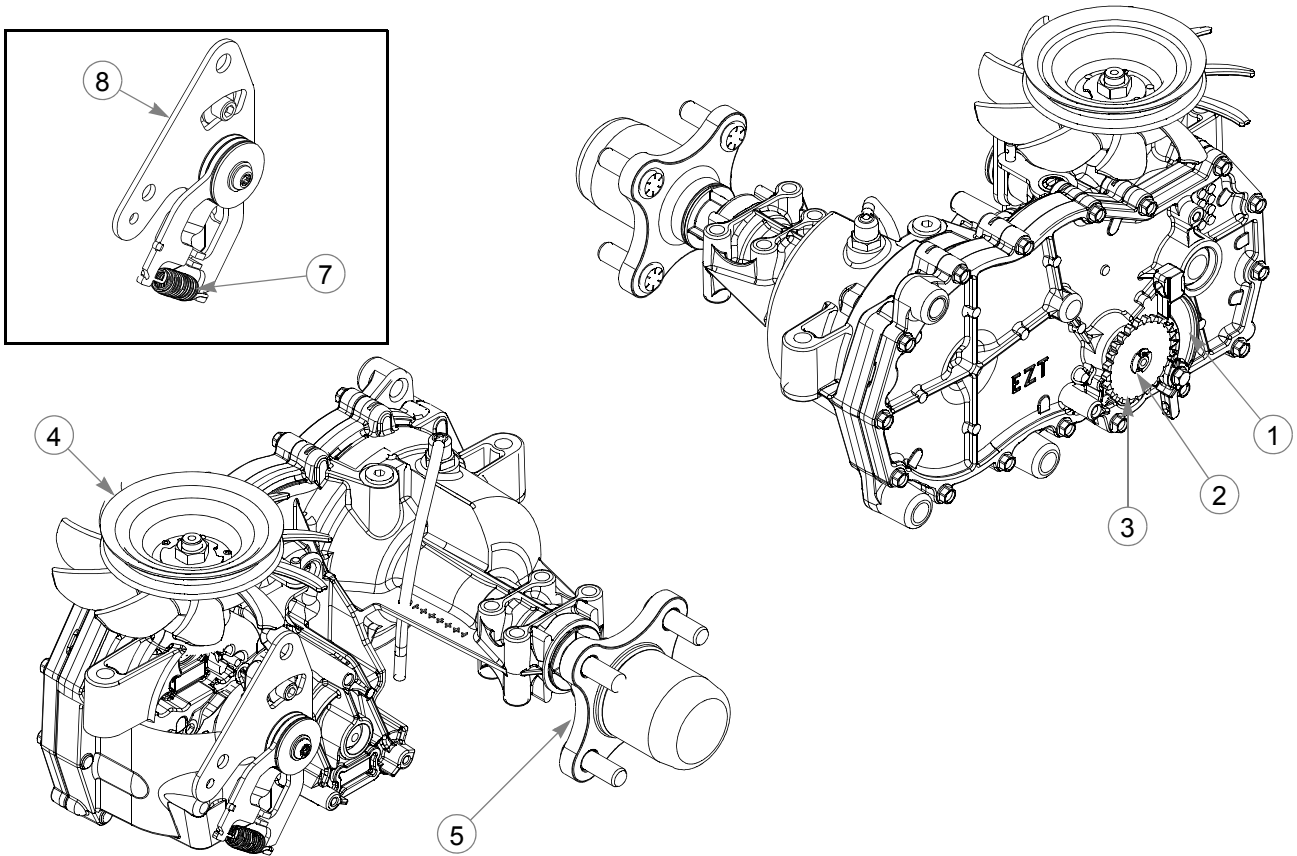
# **Transmission Assembly**

INDEX NO.	PART NO.	QTY.	DESCRIPTION
1	056036	4	CS .375-16 X 2.25 HX G5
2	110042	1	HYDROSTAT CROSS BRACE
3	767954	8	FW .406 X .812 X .060 SAE
4	054502	4	NT .375-16 HX G5 ZNY
5	604127	1	RS TRANSMISSION
6	604128	1	LS TRANSMISSION
7	116143	2	ACTUATOR
8	768515	8	FW .281 X .625 X .051/.080 HD ZN/YL
9	601051	2	OVERTRAVEL SPRING
10	068551	2	NT .250-20 HX ZY NL
11	601131	2	SPRING

---

## **NOTES:**

# Transmission Service Parts



## 604127 RIGHT SIDE TRANSMISSION

INDEX NO.	PART NO.	QTY.	DESCRIPTION
1	795047	1	PARKING PAWL KIT
2	798371	1	RETAINING RING
3	798363	1	PARK BRAKE GEAR
4	602094	1	FAN/PULLEY KIT
5	601433	1	4 BOLT HUB KIT (WITH NUT)
6	788877	1	HUB NUT
7	604903	1	HG RTN SPRING
8	604901	1	HG RTN CW

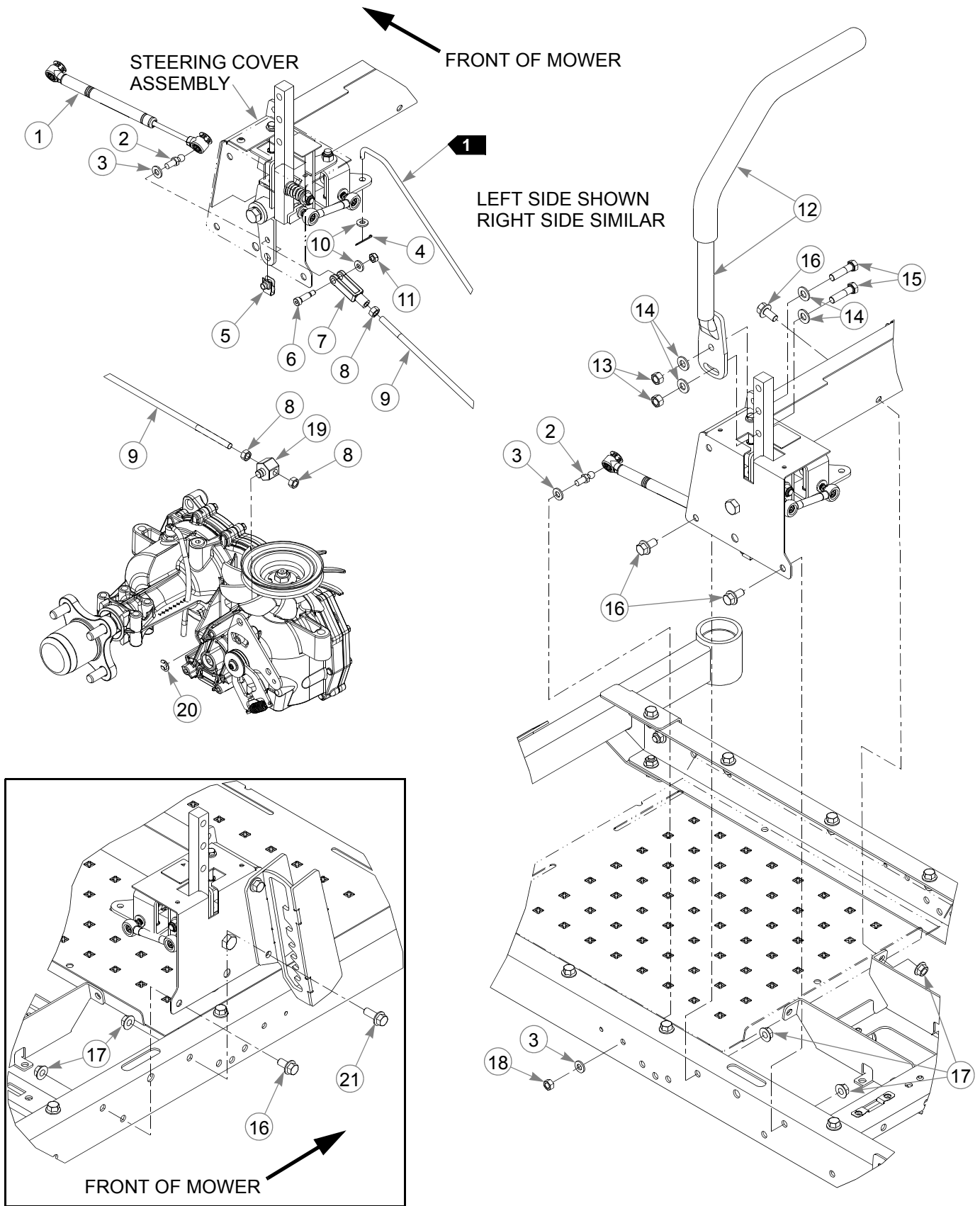
## 604128 LEFT SIDE TRANSMISSION

INDEX NO.	PART NO.	QTY.	DESCRIPTION
1	795047	1	PARKING PAWL KIT
2	798371	1	RETAINING RING
3	798363	1	PARK BRAKE GEAR
4	602094	1	FAN/PULLEY KIT
5	601433	1	4 BOLT HUB KIT (WITH NUT)
6	788877	1	HUB NUT
7	604903	1	HG RTN SPRING
8	604902	1	HG RTN CCW

---

**This page intentionally left blank.**

# Steering & Brake



---

## **Steering & Brake**

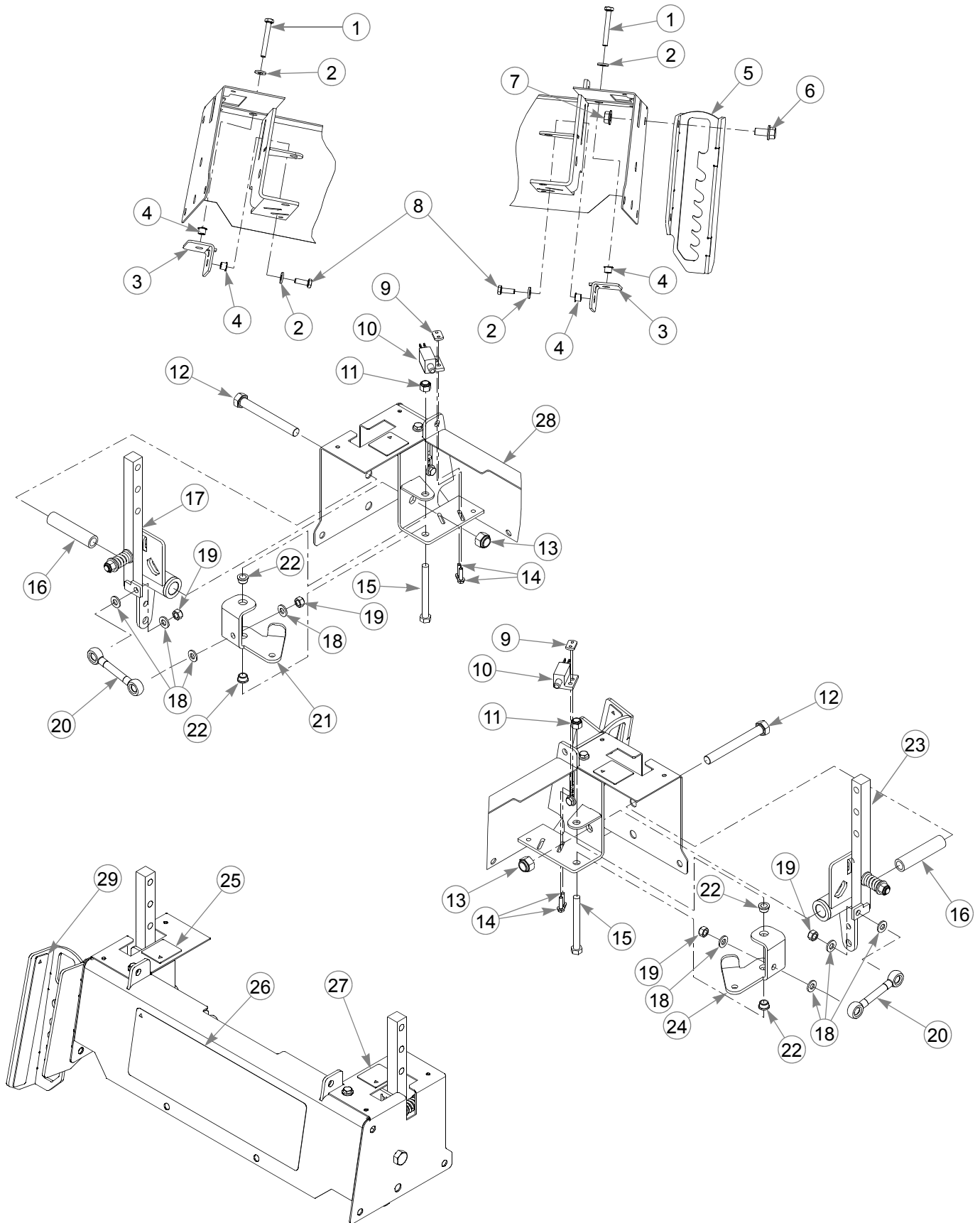
INDEX NO.	PART NO.	QTY.	DESCRIPTION
1	603983	2	DAMPER
2	781922	4	BALL STUD
3	768523	6	FW .343 X .687 X .051/.080H
4	048553	2	CP .062D X 1.00 LG HML Z
5	601069	2	CN .312-18 X .20 MAX THK
6	772483	2	SB .312 X .75 SH .250-20
7	604173	2	YOKE, 5/16-24
8	041152	6	NT .312-24 HX ZNYC
9	603905	2	STEERING ROD
10	768515	4	FW .281 X .625 X .051/.080 HD ZN/YL
11	068551	2	NT .250-20 HX ZY NL
12	110370	2	STEERING BAR (WITH GRIP)
	781260	1	STEERING BAR GRIP
13	054502	4	NT .375-16 HX G5 ZNY
14	767954	8	FW .406 X .812 X .060 SAE
15	080655	4	CS .375-16 X 1.50 HX G5
16	029629	5	CS .375-16 X .75 HX FLK
17	016899	6	NT .375-16 HX FLK ZNYC
18	034272	2	NT .312-18 HX G5 ZNYC
19	116144	2	STEERING BUSHING
20	603332	2	CLIP
21	029751	1	CS .375-16 X 1.00 HXFLK

---

### **NOTES:**

1. Part of the hydraulic assembly.

# Steering Cover Assembly



---

# **Steering Cover Assembly**

INDEX NO.	PART NO.	QTY.	DESCRIPTION
1	604452	2	CS .250-20 X 2.00 HX FLTHD
2	768515	4	FW .281 X .625 X .051/.080 HD ZN/YL
3	117540	2	DRIVE STRAIGHT STOP
4	808477	4	1/4-20 THREAD RIVET NUT
5	551912	1	LATCH WITH DECAL
6	029629	1	CS .375-16 X .75 HX FLK
7	016899	1	NT .375-16 HX FLK ZNYC
8	055939	2	CS .250-20 X .75 HX G5
9	601822	2	NUT PLATE .420 CENTERS
10	781211	2	PUSH BUTTON SWITCH
11	086660	2	NT .375-16 HX ZY NL
12	781708	2	CS .500-13 X 4.25 HX G5
13	781567	2	NT .500-13 HX G8 ZY NL
14	063198	4	CS 10-24 X .75 HX FLK ZN
15	005108	2	CS .375-16 X 3.50 HX G5 Z
16	604288	2	STEERING SPACER
17	604300	1	LS STEERING BOX
18	768523	8	FW .343 X .687 X .051/.080H
19	058776	4	NT .312-18 HX ZY NL
20	604179	2	BRAKE ROD
21	116142	1	LS BRAKE BELLCRANK
22	765339	4	BUSHING
23	604299	1	RS STEERING BOX
24	116141	1	RS BRAKE BELLCRANK
25	785220	1	RS STEERING DECAL
26	604195	1	RAPTOR ID DECAL
27	785139	1	LS STEERING DECAL
28	116134	1	STEERING COVER
29	604275	1	DECK HEIGHT DECAL

---

## **NOTES:**

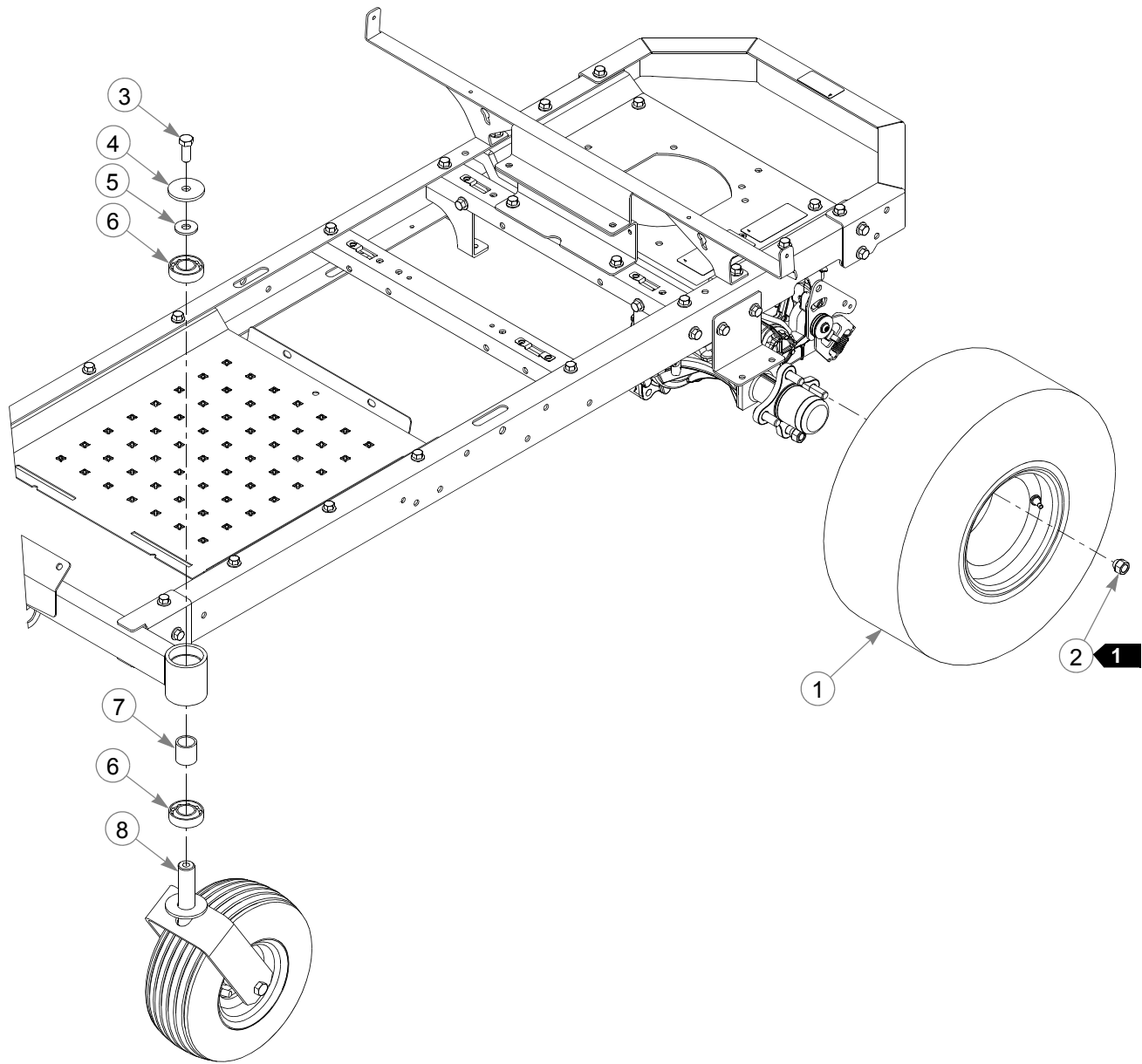


---

## Section 4

Wheel & Tire . . . . .	4-2
Front Wheel Breakdown . . . . .	4-4
Drive Wheel Breakdown . . . . .	4-6

# Wheel & Tire



---

## **Wheel & Tire**

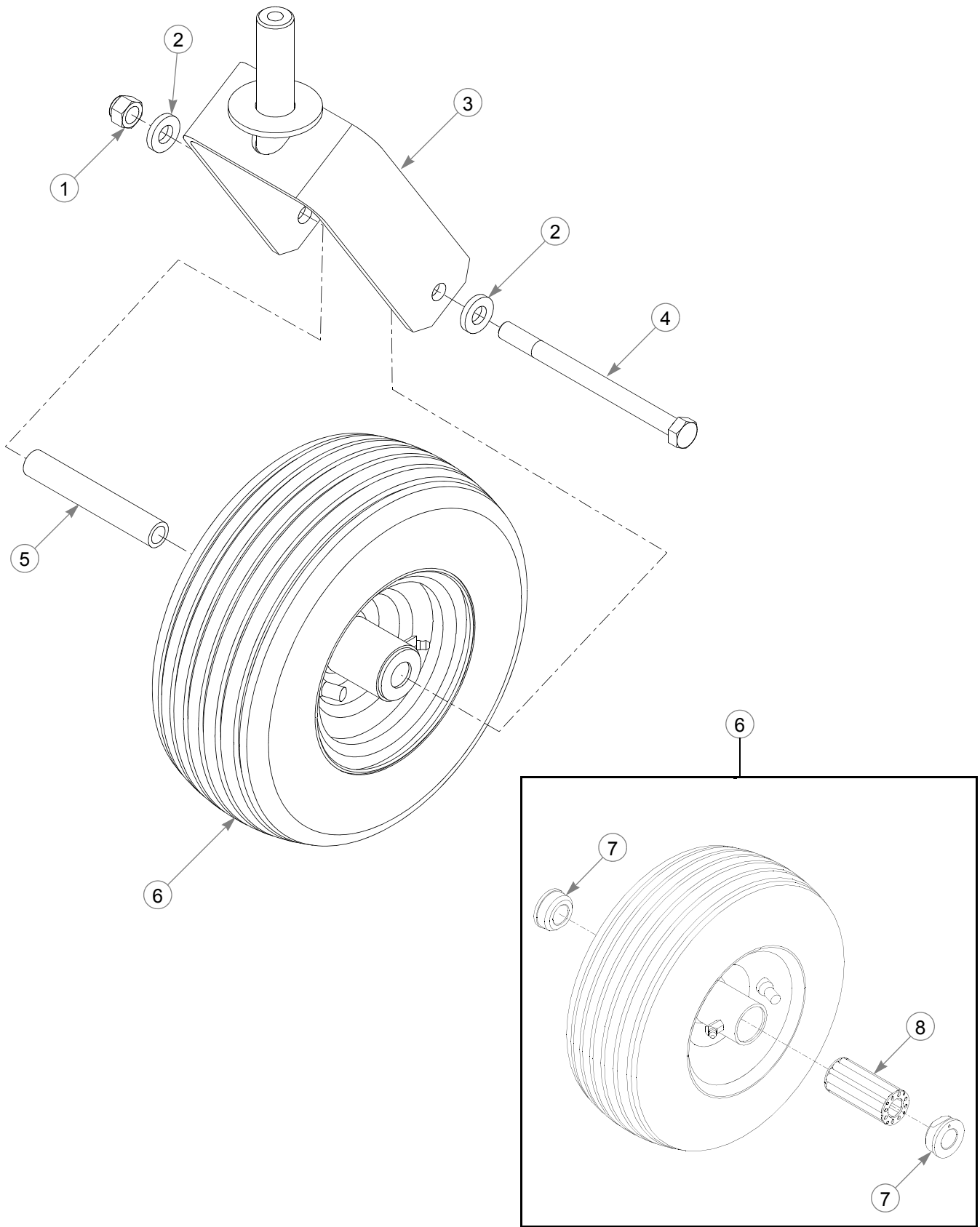
INDEX NO.	PART NO.	QTY.	DESCRIPTION
1	604013	2	TIRE/WHEEL ASSEMBLY
2	061077	8	WHEEL NUT
3	705954	2	CS .500-13 X 1.25 HX G5 ZN
4	344267	2	FW .510 X 2.15 X .187 SPL
5	712976	2	FW .531 X 1.375 X .125 ZNY
6	784223	4	BEARING
7	784603	2	SPACER
8	604358	1	LS FRONT WHEEL ASSEMBLY
	604357	1	RS FRONT WHEEL ASSEMBLY (NOT SHOWN)

---

### **NOTES:**

1. Torque to 88–102 N-m.

# Front Wheel Breakdown



---

## **Front Wheel Breakdown**

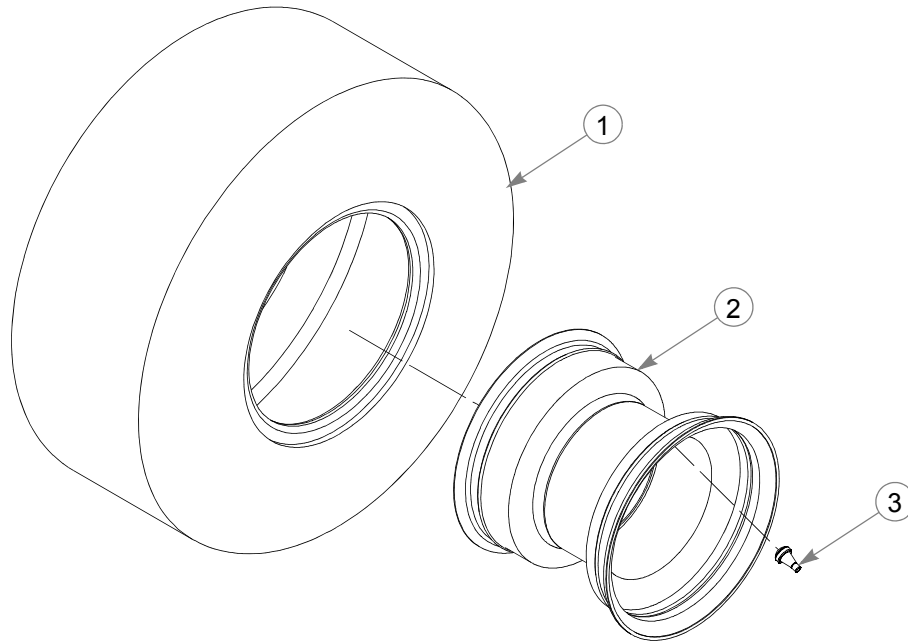
INDEX NO.	PART NO.	QTY.	DESCRIPTION
1	781567	1	NT .500-13 HX G8 ZY NL
2	767962	2	FW .531 X 1.063 X .090 SAE
3	110116	1	CASTER FORK
4	042630	1	CS .500-13 X 6.50 HX G5 Z
5	306969	1	GAUGE WHEEL SPACER
6	768044	1	TIRE/WHEEL 11 X 4-5 RIBBED
7	772806	2	BEARING CAP
8	772814	1	3/4" ROLLER BEARING

---

### **NOTES:**

---

## **Drive Wheel Breakdown**



---

INDEX NO.	PART NO.	QTY	DESCRIPTION
1	604267	1	TIRE, 18 X 8.5-8
2	601820	1	WHEEL 8 X 6.93
3	019521	1	VALVE STEM

---

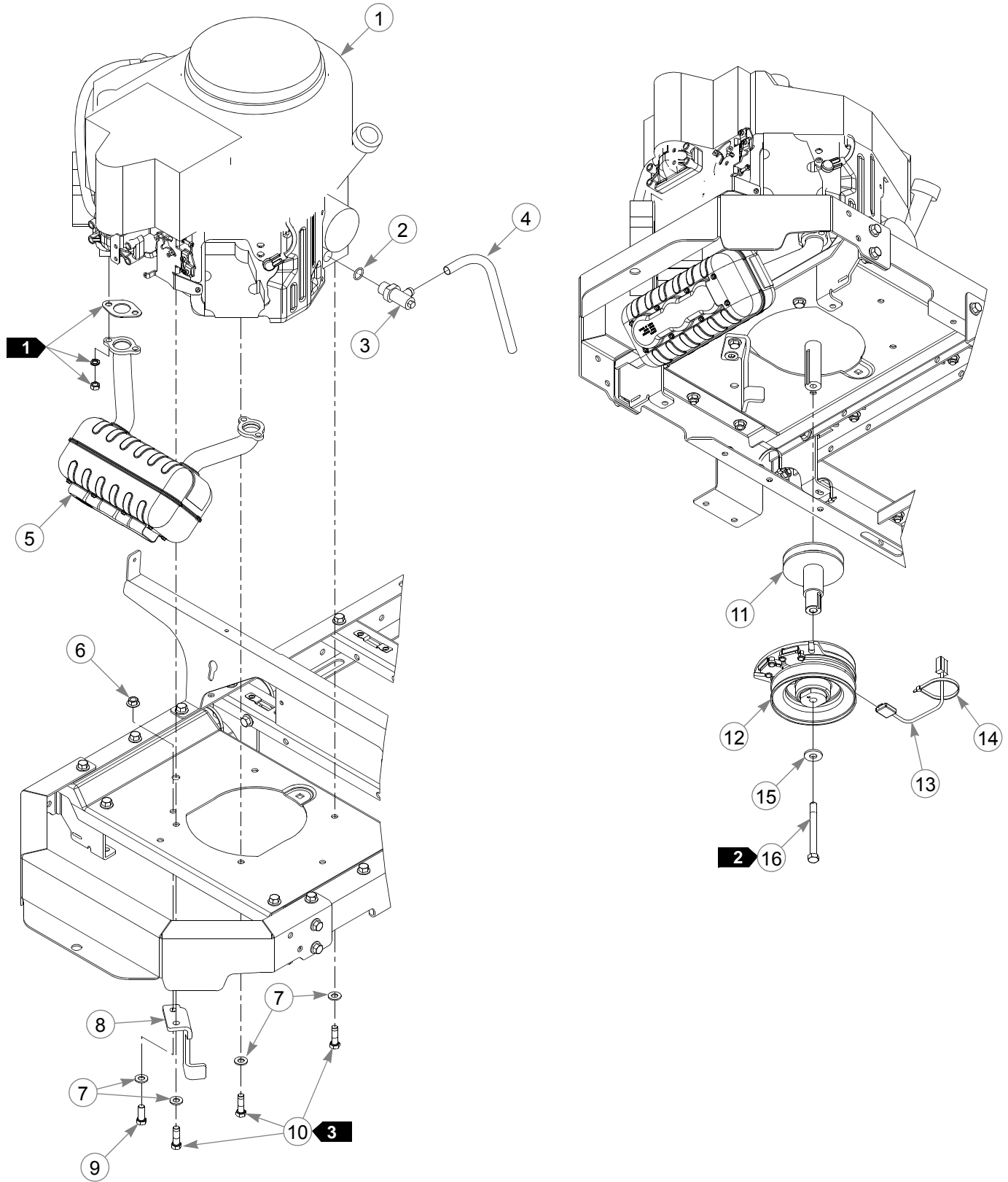
### **NOTES:**

---

## Section 5

Engine, Kawasaki FR541V . . . . .	5-2
Engine Service Parts, Kawasaki . . . . .	5-6
Fuel System . . . . .	5-8
Fuel Tank Service Parts . . . . .	5-10

# Engine, Kawasaki FR541V



---

## **Engine, Kawasaki FR541V**

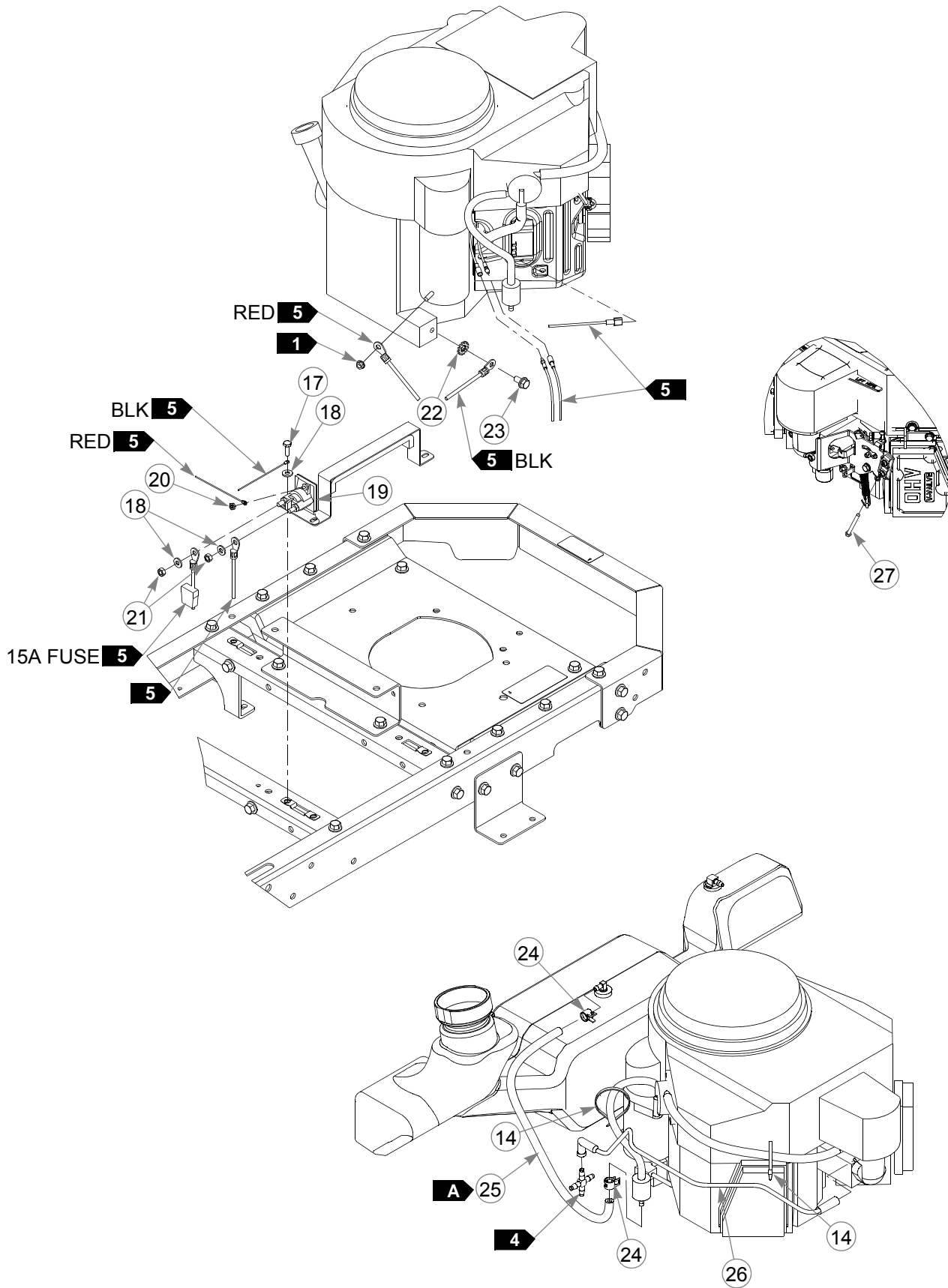
INDEX NO.	PART NO.	QTY.	DESCRIPTION
1	N/A	1	KAWASAKI FR541V ENGINE
2	604369	1	O-RING
3	604350	1	OIL DRAIN VALVE
4	604463	31cm	OIL DRAIN HOSE
5	602999	1	MUFFLER
6	016899	1	NT .375-16 HX FLK ZNYC
7	767954	5	FW .406 X .812 X .060 SAE
8	116290	1	CLUTCH ANCHOR
9	036244	1	CS .375-16 X 1.00 HX G5
10	602580	4	CS .375-16 X 1.25 HX G5 P85
11	604185	1	STUB SHAFT PUMP PULLEY
12	604244K	1	CLUTCH KIT
13	791251	1	CLUTCH HARNESS PIGTAIL
14	000331	3	WIRE TIE
15	602680	1	FW .453 X 1.12 X .119 HRD
16	604271	1	CS .437-20 X 4.00 HX G5

---

### **NOTES:**

1. Supplied with the engine.
2. Torque to 61–65 N-m. Replace (do not reuse) the cap screw if it is removed or loosened. Use only hand tools to install this fastener.
3. Torque to 41–47 N-m. Replace (do not reuse) the cap screw if it is removed or loosened. Use only hand tools to install this fastener.

# Engine, Kawasaki FR541V



---

## **Engine, Kawasaki FR541V**

INDEX NO.	PART NO.	QTY.	DESCRIPTION
17	055939	2	CS .250-20 X .75 HX G5
18	768515	4	FW .281 X .625 X .051/.080H
19	030817	1	STARTER SOLENOID
20	044255	1	NT #10-32 HX ZN
21	024927	2	NT .250-20 HX G5 ZNYC
22	029876	1	LW .312 INT-EXT TOOTH
23	720516	1	CS M8 X 1.25 X 16 HX G10.9
24	000323	2	HOSE CLAMP
25	015818	46 cm	1/4" FUEL LINE
26	604274	1	3/16" FORMED VAPOR LINE
27	603524	1	CS M5-0.8 X 50 MM DIN 933 (FUL TD)

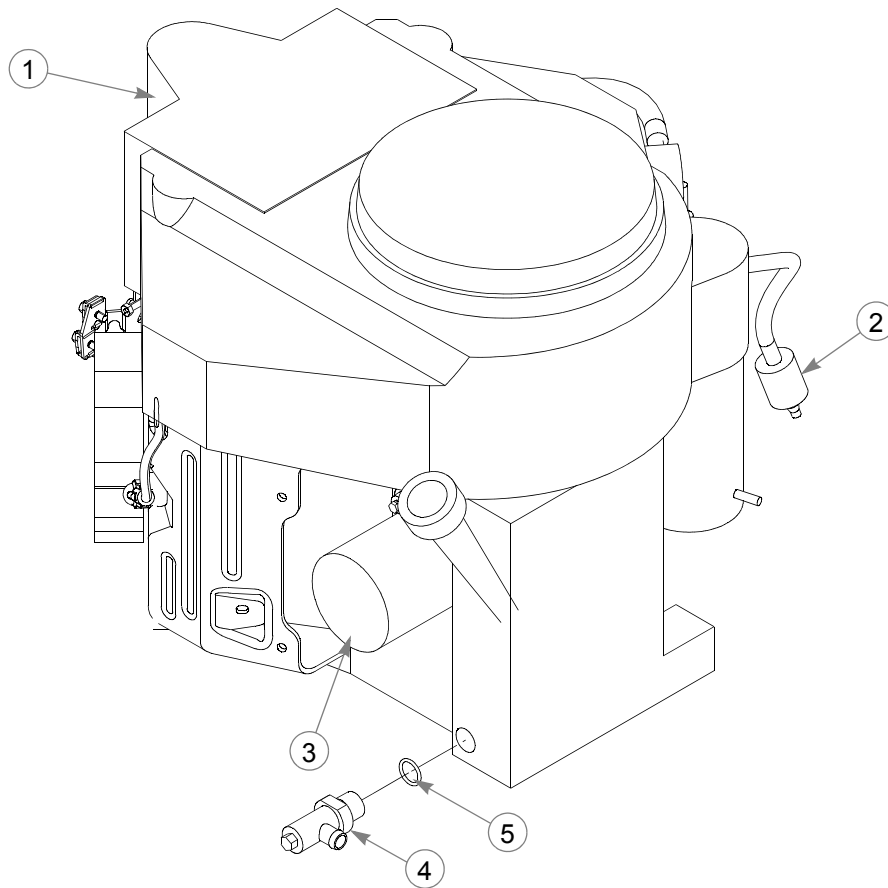
---

### NOTES:

FUEL LINE LENGTHS		
<b>A</b>	46 cm	TANK TO FUEL FILTER (FUEL)

4. Part of the fuel system.
5. Part of the wire harness.

# **Engine Service Parts, Kawasaki**



---

INDEX NO.	PART NO.	QTY	DESCRIPTION
1	603059	1	AIR FILTER
2	068478	1	IN-LINE FUEL FILTER
3	602581	1	OIL FILTER
4	604350	1	OIL DRAIN VALVE
5	604369	1	O-RING

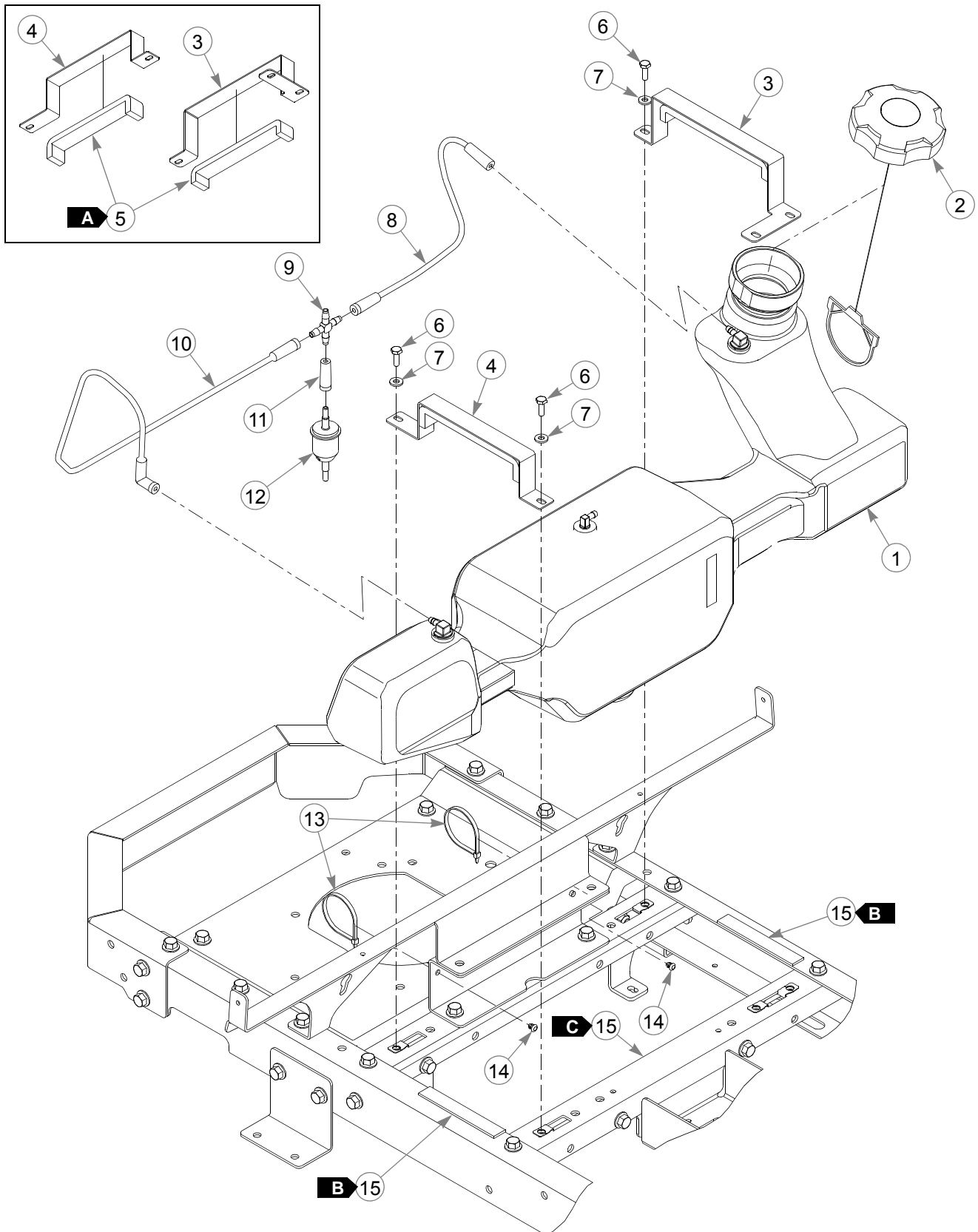
---

## **NOTES:**

---

**This page intentionally left blank.**

# Fuel System



---

# **Fuel System**

INDEX NO.	PART NO.	QTY.	DESCRIPTION
1	604336	1	FUEL TANK ASSEMBLY
2	603807	1	RATCHETING GAS CAP, 3.5"
3	117059	1	LEFT TANK MOUNT
4	117060	1	RIGHT TANK MOUNT
5	713198	47 cm	SEAL 3/8 X 3/4
6	055939	3	CS .250-20 X .75 HX G5
7	768515	3	FW .281 X .625 X .051/.080 HD ZN/YL
8	604279	1	3/16" FORMED VAPOR LINE
9	604322	1	1/4" HOSE BARB CROSS
10	604273	1	3/16" FORMED VAPOR LINE
11	604292	1	BOOT, 3/16" TO 1/4" BARB
12	604323	1	VAPOR SYSTEM FILTER
13	000331	2	WIRE TIE
14	604307	2	PUSH BUTTON MOUNT
15	033035	56 cm	WEATHERSTRIP

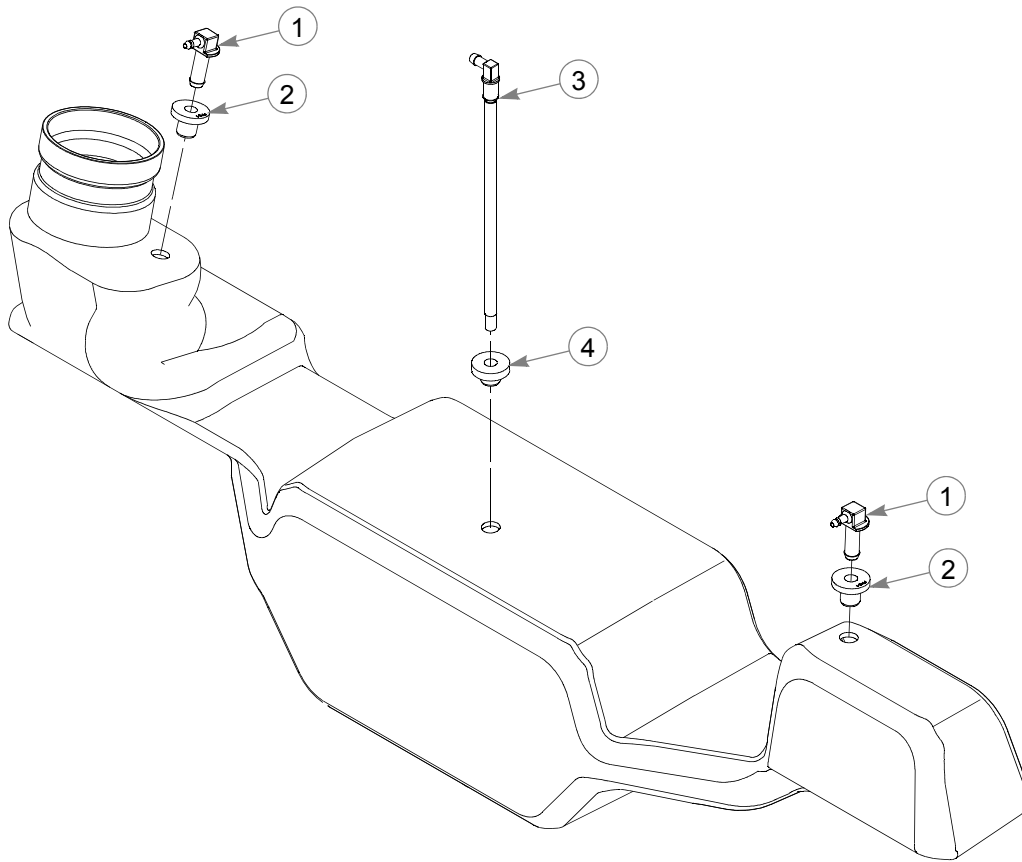
---

## NOTES:

WEATHERSTRIP LENGTH	
<b>A</b> →	23.5 cm
<b>B</b> →	13 cm
<b>C</b> →	30 cm

---

## **Fuel Tank Service Parts**



---

INDEX NO.	PART NO.	QTY.	DESCRIPTION
1	604199	2	VENT FITTING
2	604200	2	GROMMET
3	604340	1	SUCTION HOSE ASSEMBLY 7.75"
4	785295	1	GROMMET

---

### **NOTES:**

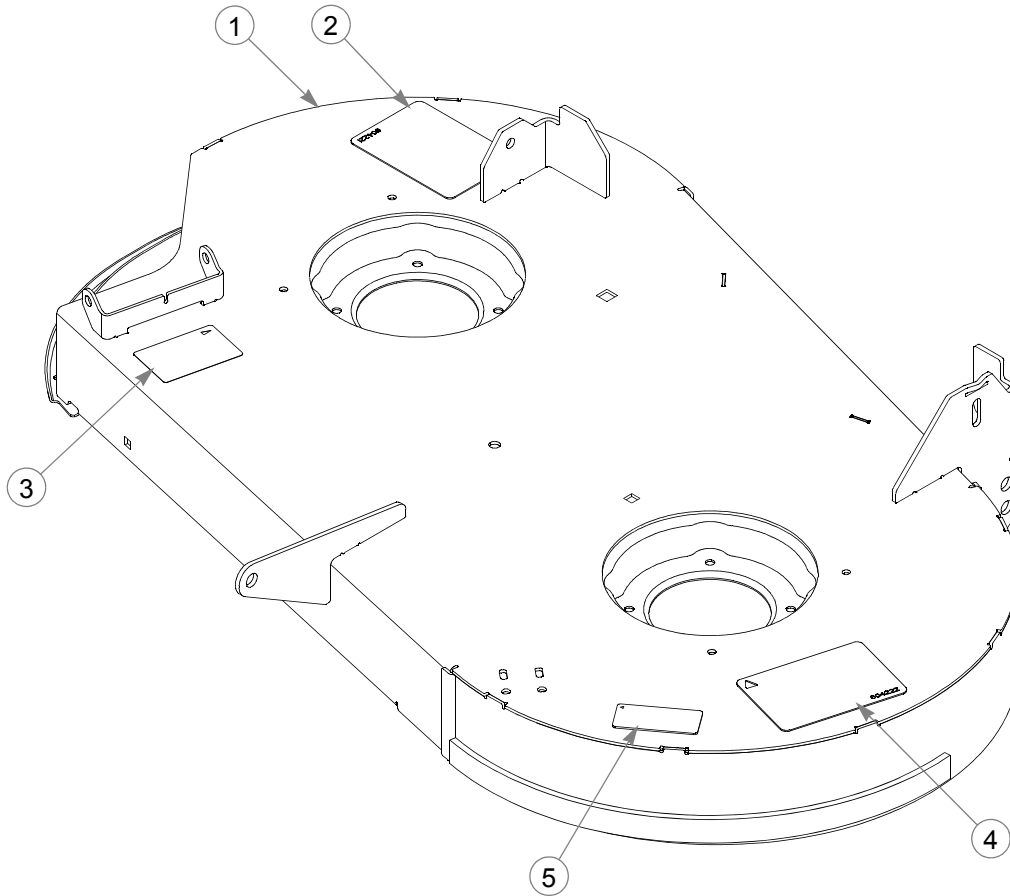
---

## Section 6

42" Service Deck . . . . .	6-2
42" Deck Pulleys & Spindles . . . . .	6-4
42" Deck . . . . .	6-6
Deck Lift. . . . .	6-8

---

# **42" Service Deck**



---

INDEX NO.	PART NO.	QTY.	DESCRIPTION
1	551896	1	42" DECK (WITH DECALS)
2	604221	1	DANGER/CHUTE DECAL
3	602243	1	BELT ROUTING DECAL
4	604222	1	DANGER/OBJECTS DECAL
5	793521	1	42" DECK ID DECAL

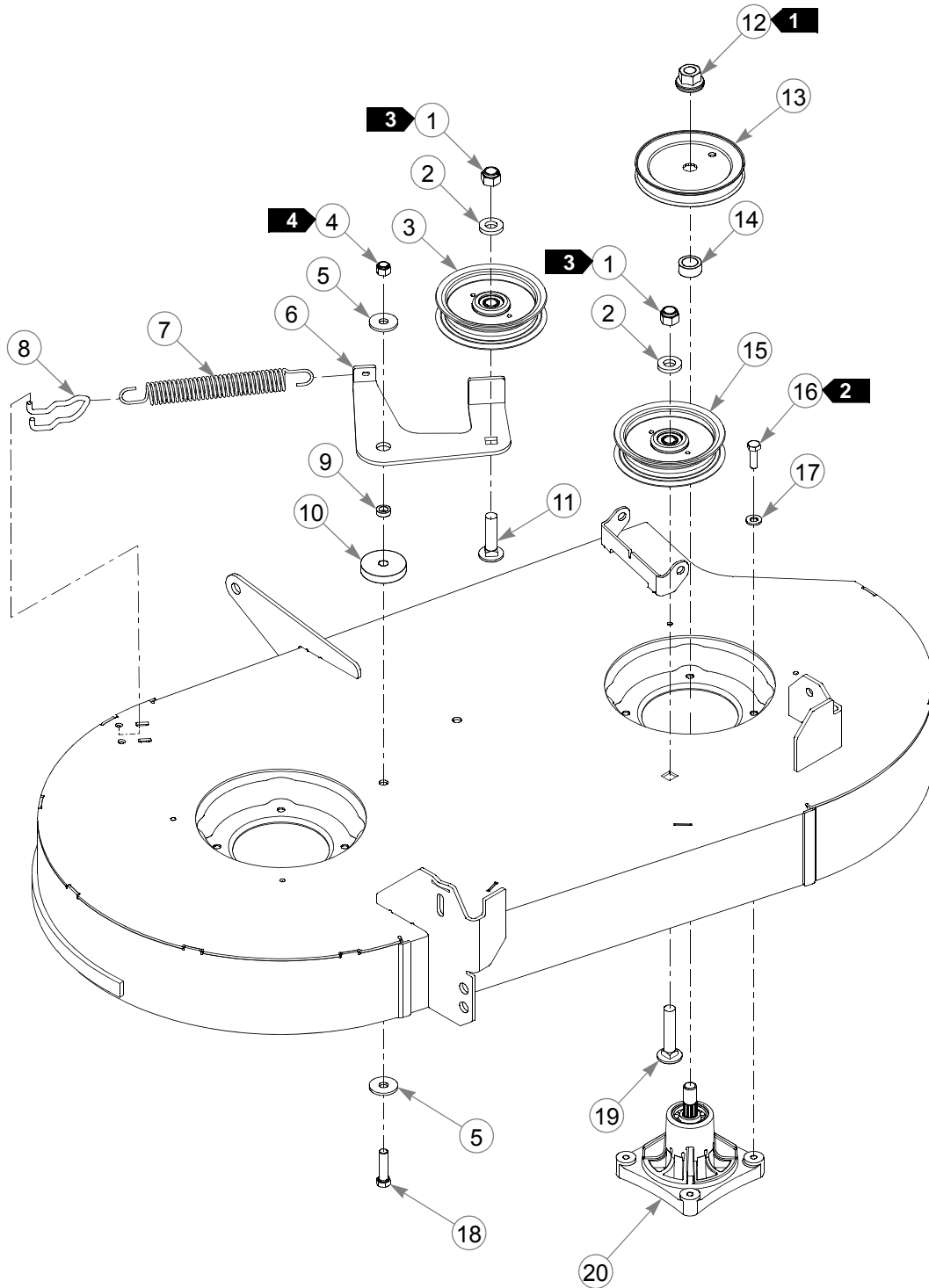
---

### **NOTES:**

---

**This page intentionally left blank.**

# 42" Deck Pulleys & Spindles



---

## **42" Deck Pulleys & Spindles**

INDEX NO.	PART NO.	QTY.	DESCRIPTION
1	781567	2	NT .500-13 HX G8 ZY NL
2	767962	2	FW .531 X 1.063 X .090 SAE
3	603986	1	IDLER PULLEY, 4.00" FLAT
4	086660	1	NT .375-16 HX ZY NL
5	712893	2	FW .406 X 1.25 X .12 HRD Z
6	117512	1	IDLER ARM
7	604291	1	IDLER SPRING
8	604110	1	SPRING TENSIONER ANCHOR
9	601839	1	PIVOT SPACER BUSHING
10	117539	1	SPACER
11	604253	1	CB .50-13 X 2.00 STD ZN
12	604172	2	NT .562-18 HX G5 ZN
13	603987	2	PULLEY
14	604123	2	PULLEY SPACER
15	604219	1	IDLER PULLEY, 4.00" FLAT
16	036236	8	CS .312-18 X 1.00 HX G5
17	768523	8	FW .343 X .687 X .051/.080H
18	080655	1	CS .375-16 X 1.50 HX G5
19	604254	1	CB .50-13 X 2.50 STD ZN
20	604214	2	SPINDLE ASSEMBLY

---

### **NOTES:**

1. Torque to 68–102 N-m.
2. Torque to 24 N-m.
3. Torque to 99 N-m.
4. Torque to 41 N-m. The idler arm should pivot freely.



---

## **42" Deck**

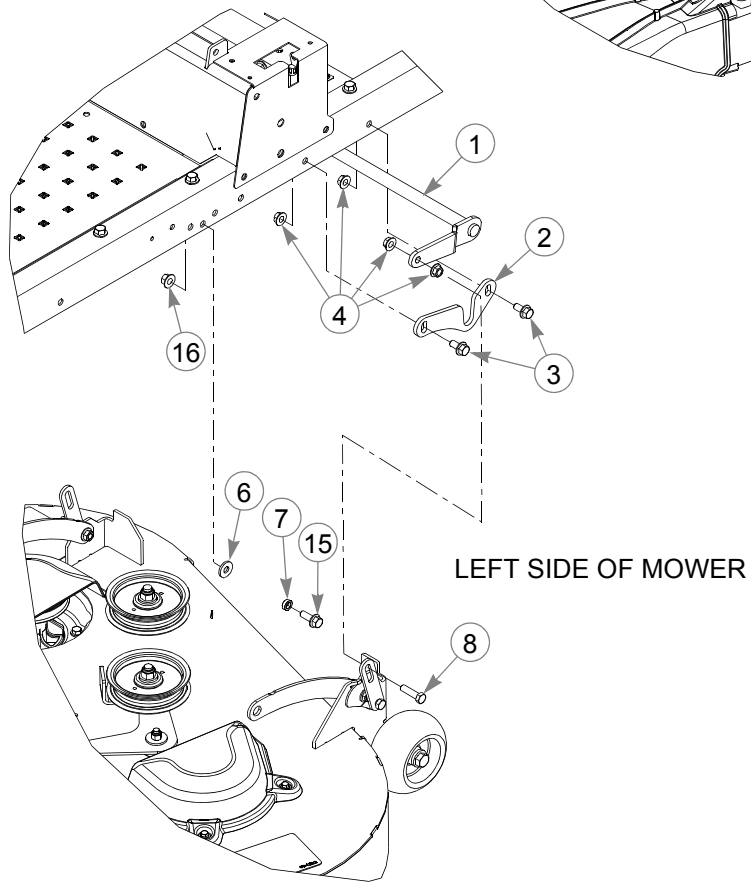
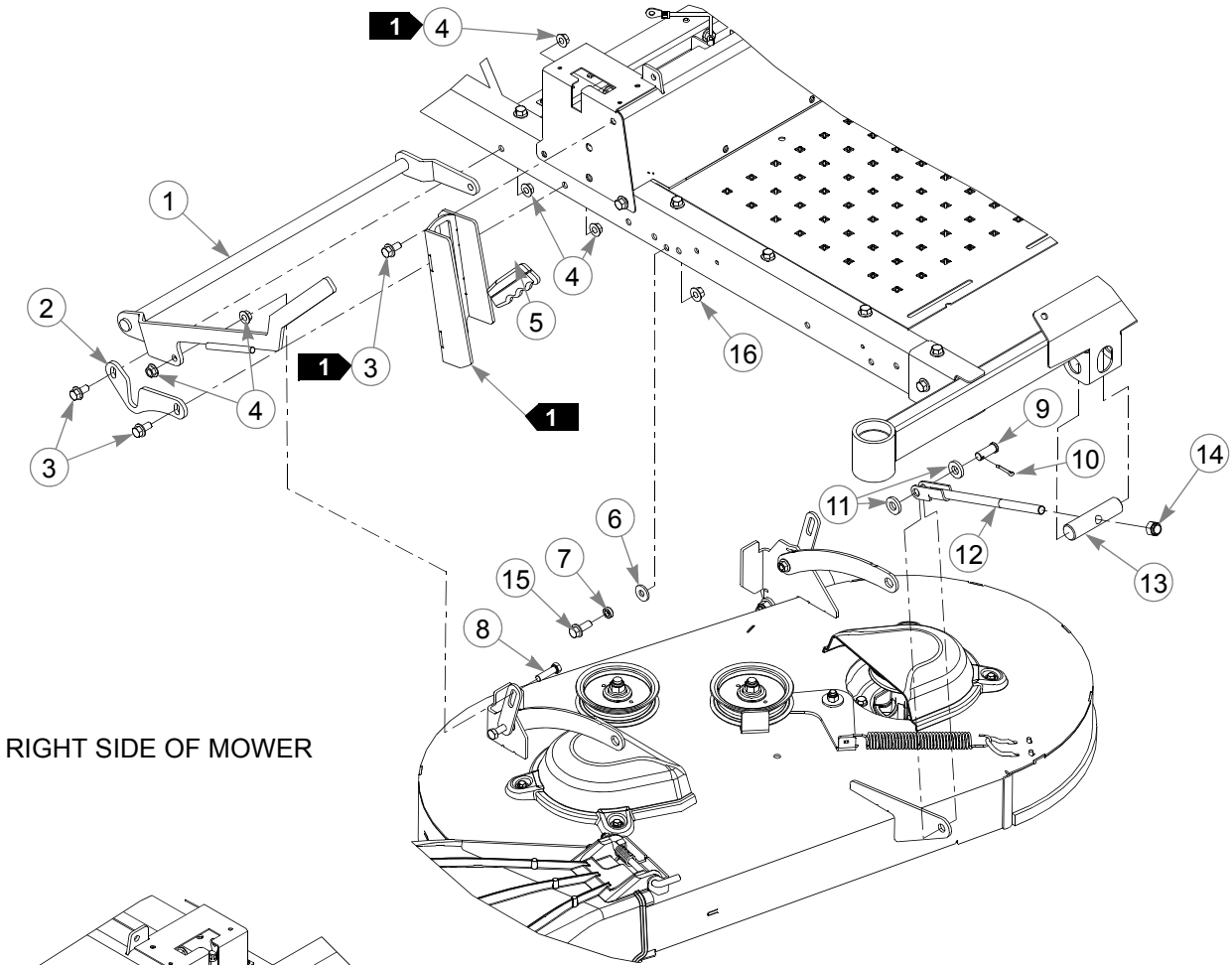
INDEX NO.	PART NO.	QTY.	DESCRIPTION
1	552183	2	PULLEY COVER
2	604324	4	CS .250-20 X .75 HX FLG
3	602562	2	NO SERVICE DECAL
4	793828	1	BELT, A SEC
5	604268	1	DISCHARGE CHUTE
6	604346	1	DISCHARGE CHUTE PIN
7	604331	1	CHUTE SPRING
8	086660	2	NT .375-16 HX ZY NL
9	016410	2	CS .375-16 X 2.00 G5 ZNYC
10	116157	2	DECK LIFT LINK
11	016899	3	NT .375-16 HX FLK ZNYC
12	601839	2	PIVOT SPACER BUSHING
13	116155	2	DECK LINK
14	116911	1	LEVELER CAM
15	767954	2	FW .406 X .812 X .060 SAE
16	706168	1	NT .375-16 HX JAM G5 Z
17	781567	1	NT .500-13 HX G8 ZY NL
18	767962	1	FW .531 X 1.063 X .090 SAE
19	788166	1	PLASTIC WHEEL ASSEMBLY
20	058776	1	NT .312-18 HX ZY NL
21	768523	1	FW .343 X .687 X .051/.080H
22	117747	1	MULCH CLOSE OFF
23	068551	2	NT .250-20 HX ZY NL
24	768515	2	FW .281 X .625 X .051/.080H
25	016253	1	CB .312-18 X .75 FUL ZN
26	117663	1	TOE GUARD EXTENSION
27	601503	2	CB .250-20 X .625 ZNYC
28	109312	1	MULCH BAFFLE
29	794214	2	BLADE, 20.50"-MUL-F-CW
	603992	2	BLADE, 20.50"-M-F-CW
	794685	2	BLADE, F20.50"-H-F-CW
	793935	2	BLADE, 20.50"-CAT-F-CW
	794230	2	BLADE, 20.50" GAT-F-CW
30	602680	2	FW .453 X 1.12 X .119 HRD
31	754101	2	CS .437-20 X 1.25 HX G5 ZNY
32	793794	2	BLADE, 20.50"-L-F-CW
33	781708	1	CS .500-13 X 4.25 HX G5
34	767962	2	FW .531 X 1.063 X .090 SAE
35	031997	1	PLASTIC WHEEL
36	053199	1	NT .500-13 HX JAM ZNYC

---

### **NOTES:**

1. Torque to 65 N-m.

# Deck Lift



---

## **Deck Lift**

INDEX NO.	PART NO.	QTY.	DESCRIPTION
1	116156	1	LIFT HANDLE
2	116151	2	PIVOT BLOCK
3	029629	4	CS .375-16 X .75 HX FLK
4	016899	8	NT .375-16 HX FLK ZNYC
5	604377	1	GRIP
6	712919	2	FW .406 X 1.00 X .12 HRD Z
7	601839	2	PIVOT SPACER BUSHING
8	005116	2	CS .375-16 X 1.375 HX G5
9	027714	1	CE .500 X 1.25 .156 X 1.093
10	017251	1	CP .156D X 1.00 LG HML Z
11	767962	2	FW .531 X 1.063 X .090 SAE
12	603918	1	LIFT ROD
13	603920	1	PIVOT PIN
14	781567	1	NT .500-13 NL G5
15	029751	2	CS .375-16 X 1.00 HX FLK
16	604515	2	NT 0.375-16 FL NY GF

---

### **NOTES:**

1. Part of the steering cover assembly.

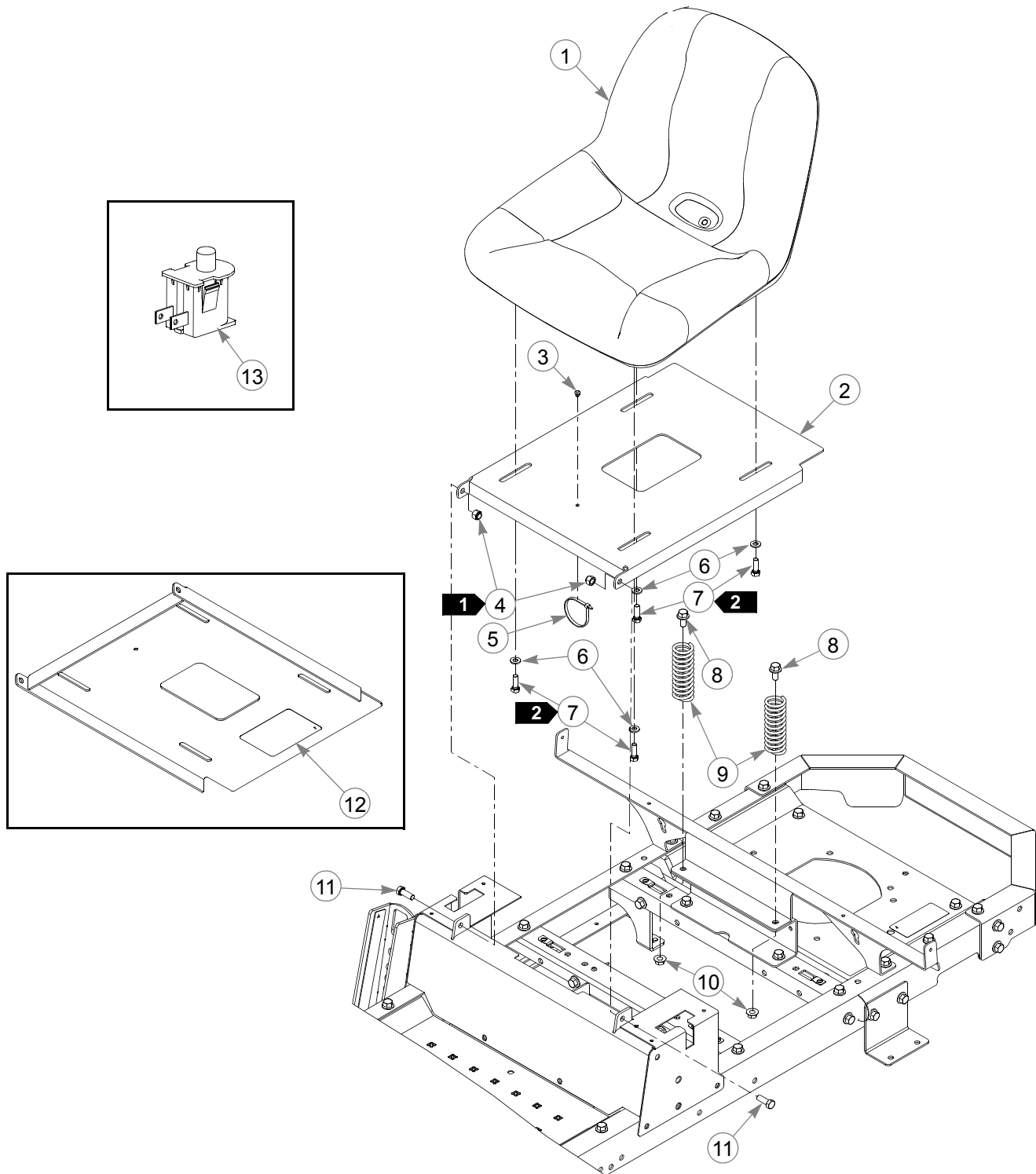
---

---

## Section 7

Seat ..... 7-2

# Seat



---

# **Seat**

INDEX NO.	PART NO.	QTY.	DESCRIPTION
1	601807	1	STANDARD SEAT
2	551897	1	SEAT PAN (WITH DECAL)
3	604307	1	PUSH BUTTON MOUNT
4	086660	2	NT .375-16 HX ZY NL
5	000331	1	WIRE TIE
6	768523	4	FW .343 X .687 X .051/.080H
7	036236	4	CS .312-18 X 1.00 HX G5
8	029629	2	CS .375-16 X .75 HX FLK
9	793851	2	COMPRESSION SPRING 1.25 X 4.00 X .188
10	016899	2	NT .375-16 HX FLK ZNYC
11	036244	2	CS .375-16 X 1.00 HX G5
12	601815	1	BATTERY WARNINGS DECAL
13	793315	1	SEAT SWITCH

---

## **NOTES:**

1. Do not torque; the seat pan must pivot freely.
2. Torque to 9.5 N-m.

