

# Kilworth Forestry Trailer

## Operators Manual



Kilworth Machinery Ltd., Annwell Lane, Smisby, Ashby de la Zouch LE65 2TA  
Tel: 01530 412690 Fax: 01530 560002 Email: [sales@kilworthmachinery.co.uk](mailto:sales@kilworthmachinery.co.uk)  
[www.kilworthmachinery.co.uk](http://www.kilworthmachinery.co.uk)

Model:

Serial Number:

Date supplied:



Kilworth Machinery Ltd., Annwell Lane, Smisby, Ashby de la Zouch LE65 2TA  
Tel: 01530 412690 Fax: 01530 560002 Email: [sales@kilworthmachinery.co.uk](mailto:sales@kilworthmachinery.co.uk)  
[www.kilworthmachinery.co.uk](http://www.kilworthmachinery.co.uk)

# 1. Introduction

This Operators Manual is part of the machine to which it relates and must be kept available for any operators to refer to.

The Kilworth Forestry Trailer is designed for use in woodland and forestry in conjunction with a suitable tractor.

Permitted load values must not be exceeded in any circumstances.

Even if you have experience of this type of machine, we recommend you read these instructions carefully in order to familiarise yourself with the product.

Throughout this manual your attention will be drawn to possible hazardous situations by the use of this symbol:



Whenever you see this symbol take careful note of the message that follows. It is for your own benefit.

**If a crane is fitted, this manual must be read in conjunction with the Crane Operators Manual.**

## 2. Purpose of the Machine.

The Kilworth KFT Forestry trailers are designed for the loading and transport of lengths of timber in a forestry/woodland application. They are designed for off highway use behind a suitable agricultural/forestry tractor.

The KFT trailer should not be used for any other purpose.

The KFT trailer is designed for use only with Farma C35 or C42 cranes.



**WARNING:** Only use the KFT trailer for the transportation of wood in forestry applications.



Kilworth Machinery Ltd., Annwell Lane, Smisby, Ashby de la Zouch LE65 2TA  
Tel: 01530 412690 Fax: 01530 560002 Email: sales@kilworthmachinery.co.uk  
www.kilworthmachinery.co.uk

### 3. Specifications

Model	Capacity	Load Length	Width	Weight
KFT25	2.5t	2.5m	1.5m	800kg
KFT30	3.0t	3.0m	1.5m	900kg

Weights are without crane. See Crane manufacturers documentation for further information.  
Max transport speed 25 km/h.

### 4. Safety Notes.

A major concern in operating machinery is safety. You, the operator can avoid accidents by observing the following precautions.



**Study and follow these precautions and insist on those working with you follow them.**

- Due to its function the KFT Trailer can be dangerous if used incorrectly. Ensure any operators have read this manual and have a full understanding of the machines operation before they use it.
- Ensure the tractor is capable of handling the load.
- Always wear relatively tight and tucked in clothing to avoid entanglement in the machine.
- If bystanders must be present then keep them well away (at least 25m) while the machine is in operation.
- Only operate the crane from the tractor. Do not stand between the tractor and trailer.
- Only operate the crane on level ground.
- Pay attention to the ground you are working on. Do not operate the crane on very soft ground as there is a risk of the crane legs sinking in, leading to instability.
- Never operate the crane without the stabiliser legs down.
- Beware of overhead power lines when operating the crane.
- Be aware that when loading, the trailer is least stable when it is empty.
- When travelling with a fully loaded trailer, the risk of instability on slopes is increased. Always drive straight up or straight down steep slopes where possible.



Kilworth Machinery Ltd., Annwell Lane, Smisby, Ashby de la Zouch LE65 2TA  
Tel: 01530 412690 Fax: 01530 560002 Email: sales@kilworthmachinery.co.uk  
www.kilworthmachinery.co.uk

- If it is necessary to drive across a slope, pay special attention, drive slowly and look out for obstacles. Remember a part loaded trailer will be more stable than a fully loaded one.
- If you need to work on the machine (for example, to make an adjustment):
  - Lower the crane fully to the ground
  - Stop the tractor engine
  - Release any hydraulic pressure
  - Engage the handbrake
  - Remove the ignition key
- At no time should you walk under a raised machine.
- Never park the crane with the log grab loaded.
- The operator should have access to and use appropriate PPE: Gloves, Safety boots, Protective goggles, Skin protection products.

## 5. Operation

### 5.1 Connecting to tractor

Crane operation will be briefly covered here but for full information please consult the crane manufacturers operators manual.

Pin the swivel hitch to the tractor hitch using the correct drawbar pin for the tractor.

Note that the axles can be moved along the chassis to alter the nose weight on the drawbar. Moving the axle forward will reduce nose weight and moving them back will increase nose weight. Insufficient or no nose weight can be dangerous as it can cause instability of the tractor. Set the axle position so that weight is transferred to the tractor without exceeding the weight limit of the drawbar.

Slacken the mounting bolts as shown below, block the wheels and slowly push or pull with the tractor to move the axle.



There are 2 possibilities for positioning the control valve.

1. Mounted to the trailer. In this case the block can be swivelled so that the operator can stand to the left or right of the drawbar.



**WARNING:** Always stand on the opposite side of the drawbar to the crane. If you are lifting logs to the left of the trailer, stand on the right hand side of the drawbar.

2. Mounted to the tractor. Position the lever control block so that the levers are accessible from the tractor. The block is designed to hook over the rear window frame or a cross member on the tractor.



Connect the pressure and return pipes to a flow and return on the tractor. The hoses are clearly marked "Pressure" and "return". Do not connect the wrong way round.

Where hydraulic brakes are fitted, connect the brake hose to a single acting spool valve. **This hose must only be connected when the return hose is connected otherwise damage to the brake system can occur.**



**WARNING:** Hydraulic hoses are not allowed in the tractor cab.



Kilworth Machinery Ltd., Annwell Lane, Smisby, Ashby de la Zouch LE65 2TA  
Tel: 01530 412690 Fax: 01530 560002 Email: sales@kilworthmachinery.co.uk  
www.kilworthmachinery.co.uk

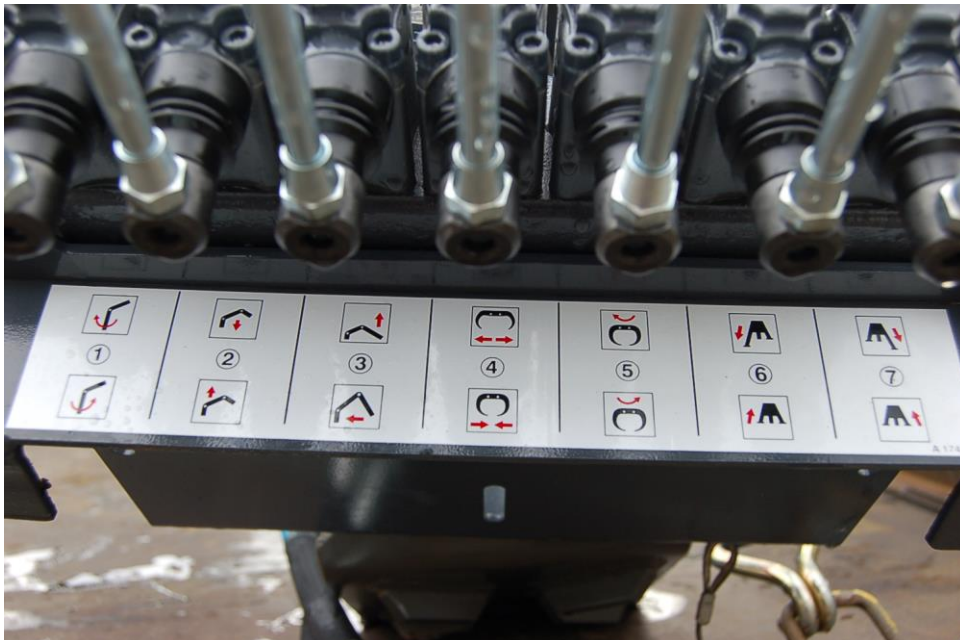


**WARNING:** Hydraulic oil under pressure can pierce the skin and cause serious injury or death. Always release pressure from the system before any maintenance or adjustments. Wear gloves and eye protection.

Check all hydraulic connections for leaks.

Familiarise yourself with the control levers as follows.

7 lever control unit, from left to right:



1. Slewing, left/right
2. 1<sup>st</sup> boom up/down
3. 2<sup>nd</sup> boom in/out
4. Grab open/close
5. Grab rotate left/right
6. Left stabiliser up/down
7. Right stabiliser up/down



Kilworth Machinery Ltd., Annwell Lane, Smisby, Ashby de la Zouch LE65 2TA  
Tel: 01530 412690 Fax: 01530 560002 Email: [sales@kilworthmachinery.co.uk](mailto:sales@kilworthmachinery.co.uk)  
[www.kilworthmachinery.co.uk](http://www.kilworthmachinery.co.uk)

Joystick version control valve, from left to right:



1. Joystick with 2 functions: Slewing left to right / second boom up and down.
2. Telescopic boom in and out.
3. Left stabiliser up/down
4. Right stabiliser up/down
5. Grab open/close
6. Joystick with 2 functions: main boom up and down / rotate grab

If you have never operated a crane before it is recommended that you practice moving the crane first before starting to load logs. Set the tractor at low revs and lower the stabiliser legs.



**WARNING.** Always lower both stabiliser legs before using the crane.

Begin by using 1 function at a time. Operate the levers smoothly. As you become used to the actions performed by each lever you can increase the engine revs and also begin to operate more than 1 function at once. You will find that operating

** Kilworth**

Kilworth Machinery Ltd., Annwell Lane, Smisby, Ashby de la Zouch LE65 2TA  
Tel: 01530 412690 Fax: 01530 560002 Email: sales@kilworthmachinery.co.uk  
www.kilworthmachinery.co.uk

more than 1 function will lead to smoother operation. However, it will take some practice to achieve this.

Stop each movement smoothly so that the grab does not swing from side to side. Avoid hitting the end of hydraulic cylinder travel at full speed.

Ensure that you limit the slewing of the crane so that it does not risk colliding with the operator or tractor.

## 5.2 Loading and unloading.

Try to position the trailer as close to the logs as possible and fully lower both stabiliser legs. As you grab each log, lift the crane a little so the logs falls in to the grab. Lift the load in towards the trailer before lifting and slewing to avoid tipping the trailer. Grip the logs at a certain point so that they tend to hang down towards the headboard.



**WARNING:** Do not load the logs above the tops of the bolsters.



**WARNING:** The trailer is least stable when empty, at the beginning of the loading operation and the end of unloading. Be aware it will become more unstable as you reduce the load.

Make sure the log grab rests securely on the load during transport. It is best to leave the grab locked around the last batch of logs when travelling.

When unloading, first take logs from the edge near the bolsters. When unloading try to grab the logs so they hang horizontal. Place gently on the heap. Do not make the heap too high or steep or it will collapse. Beware of rolling logs.



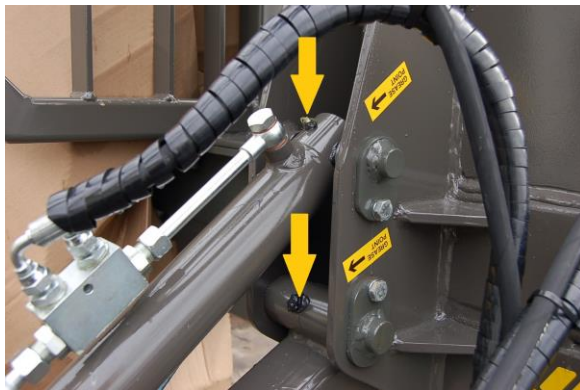
# 6.Maintenance

Please refer to the Crane Operators Manual for full details of crane maintenance.

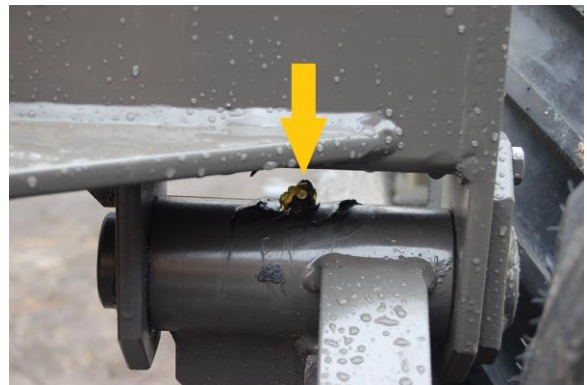
Maintenance and repairs of the machinery are important for safety and performance reasons. The daily routine should always include maintenance.

Daily checks and maintenance:

- Check all hydraulic hoses and repair any leaks before further use.
- Check all fasteners on the crane and chassis are tight.
- Check tyre pressures. 20psi for 26x12.00-12 tyres.
- Check all pivot points for play. If pins or bushes are worn replace immediately before further use.
- Grease all pivot points (see crane manual for details of all grease points)
- Check hydraulic oil level in tractor
- Smear grease on the bottom of the bolsters to prevent seizure in the swivel housings.



Stabiliser legs



Axle beam pivot

